

## Acadia National Park Trip Assistant



### How Much Time?

If you only have a day, spend it on Mount Desert Island, hitting the high-lights listed below. Go hiking too. Acadia offers some of the best trails on the East Coast. While trails are short and the maximum elevation is under 2,000 feet, things get quite tough, with a few being more vertical than horizontal.

With two days, I'd still only spend them on Mount Desert Island, doing more hiking, maybe renting bikes or kayaks or joining a boat cruise or ranger program.

With three days, now you start thinking about heading over to Isle au Haut and/or Schoodic Peninsula. They're nice, but Mount Desert Island's business is warranted.

If you plan on visiting all three areas, having a base camp in Elsworth can work out fairly well. MDI, Schoodic Peninsula, and Stonington are all reasonable daytrips. It's likely you'll save some money too. Downsides are the extra driving and not being where all the pretty scenery is (but, hey, those campsites are hard to get and Bar Harbor is \$\$\$).

### Need to Know

- [Reservations](#) are required to drive Cadillac Summit Road during peak season.
- [Reservations](#) are required for camping.
- Ladder trails are fun but dangerous. Do not attempt them in wet or icy conditions.
- Precipice Trail closes in summer.
- The best chance of a thunderous Thunder Hole is between high and low tides.
- The park is very busy in summer. Get an early start or use the [Island Explorer Shuttle](#) to avoid congestion headaches.

### Maps

Mount Desert Island: [PDF](#) | [JPG](#)  
Schoodic Peninsula: [PDF](#) | [JPG](#)  
Isle au Haut: [PDF](#) | [JPG](#)  
Region: [PDF](#) | [JPG](#)

### [Google Map w/ Trails, Attractions, and Outfitters](#)

All 63 National Parks Map: [PDF](#) | [JPG](#)  
Eastern National Park Service Units Map: [PDF](#) | [JPG](#)

### Highlights

Bar Harbor  
Sand Beach  
Otter Cliff  
Jordan Pond House  
Cadillac Mountain  
Echo Lake  
Bass Harbor Head Lighthouse  
Schoodic Peninsula  
Isle au Haut (by boat)



## Favorite Trails

### Easy

[Bar Island](#)

[Ocean Path](#)

[Summit Path](#)

### Moderate

[Gorham Mountain](#)

[Bubble Rock](#)

### Strenuous

[Giant Slide](#)

[Sargent Mountain](#)

[Northwest Pemetic](#)

### Extreme

[Precipice](#) (pictured)

[Beehive](#)

[Ladder](#)

[Jordan Cliffs](#)

## Activities

Hiking

Rock Climbing

Paddling

Boat Tours

Carriage Tours

Biking

Flightseeing

Swimming

Fishing

Birdwatching

See this [Google Map](#) for pins to area outfitters offering tours and rentals as well as all favorite trails and attractions.

## Road Trip

Here's a [Google Map](#) to help plan road trips from the west (Cuyahoga Valley) or south (New York City). It's a good start, but I'd highly recommend making your own.

There's much more to our country. Here's another [Google Map](#) with points of interest across all types of public land.

For campers, here's a [Google Map](#) with National Forest campgrounds. National Park campgrounds are difficult to reserve (there are about 200!). With nearly 5,000 national forest campgrounds, you can usually pull in and find a spot.

## Highlights

[Niagara Falls SP](#) (NY)

[Letchworth State Park](#) (NY)

[Watkins Glen SP](#) (NY)

[Taughannock Falls SP](#) (NY)

[Franconia Notch SP](#) (NH)

[Baxter State Park](#) (ME)

[Mohonk Preserve](#) (NY)

[Jamaica State Park](#) (VT)

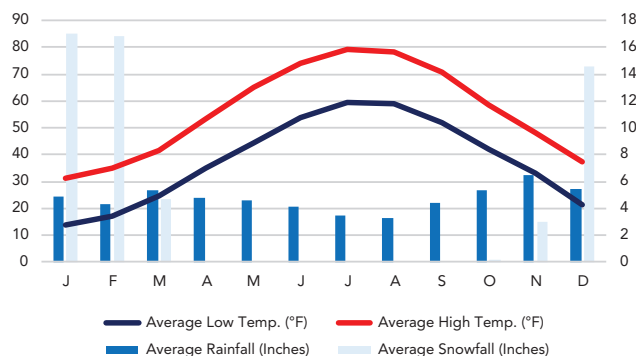
[Crawford Notch SP](#) (VT)

[Grafton Notch SP](#) (ME)

## When To Go

### Weather

Acadia National Park: 470 ft Elevation



### Visitation

Acadia National Park Visitation

