



American Samoa National Park Trip Assistant

How Much Time?

You're traveling an awful long way to see this place, you should stay a while. American Samoa was one of the last places on the map without a case of coronavirus. Tourism has returned, but

things are different. I'd recommend taking a look at [QT Luong's post](#) about visiting in 2024. It's island culture, so you need to carry with you a dude-like relaxed attitude :) Just go with the flow, my friends.

Need to Know

- I purposefully don't pay attention to what other people are doing in this national parks market, but QT Luong and I have discussed business and books, and, of course, national parks a bit over the years. He has a [good write up](#) on visiting American Samoa post-pandemic. And maybe give his [books](#) a look. They're beautiful.

Maps

Tutuila: [PDF](#) | [JPG](#)

Ofu, Olosega, and Tau: [PDF](#) | [JPG](#)

Region: [PDF](#) | [JPG](#)

Globe: [PDF](#) | [JPG](#)

[Google Map w/ Trails and Attractions](#)

All 63 National Parks Map: [PDF](#) | [JPG](#)

Remote Islands NPS Units Map: [PDF](#) | [JPG](#)

Highlights

Ofu Beach

Vatia Bay

Mount Alava

Laufuti Falls



Road Trip

It's a group of small islands with friendly locals, not your typical road trip destination as we've come to know and love back on the mainland.

There's much more to our country. Here's another [Google Map](#) with points of interest across all types of public land.

For campers, here's a [Google Map](#) with National Forest campgrounds. National Park campgrounds are difficult to reserve (there are about 200!). With nearly 5,000 national forest campgrounds, you can usually pull in and find a spot.

Activities

Snorkeling
SCUBA Diving
Hiking

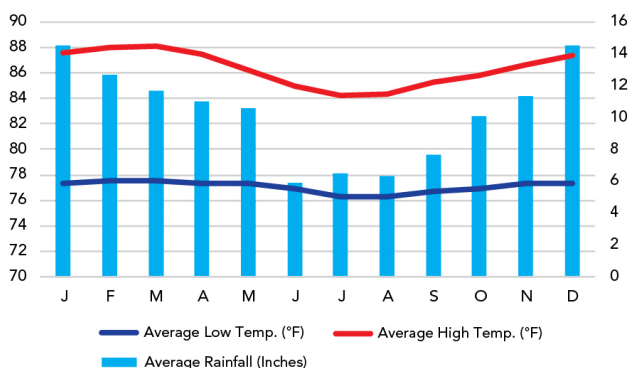
Highlights

The islands are extremely isolated, so it's mostly Pacific Ocean and a few spits of land. I'm not much help here.

When To Go

Weather

Pago Pago: 12 ft Elevation



Visitation

American Samoa Visitation

