



Arches National Park Trip Assistant

How Much Time?

There's only about 15 miles of maintained trails in the park, so you can see the majority of popular sites in a sunup-to-sundown day, no problem.

But the park says there are more than 2,000 arches here, leaving plenty of room for independent exploration. It's also

a wonderful photography destination. So, if you enjoy taking pictures, spend a few mornings/evenings.

This is also one of the most beautiful corner's of our country. Set aside some time to enjoy a bunch of the spots pinned on the road trip map, especially if you'd like to shake the Moab crowds for a bit.

Need to Know

- A **timed-entry permit** is required during peak visitation.
- **Reservations** are required for camping most of the year. It's a fantastic campground but hard to get a site.
- Visitation peaks in summer but it's also the worst time to visit, due to (often) oppressive heat.
- Upper Delicate Arch Viewpoint might sound like a good idea (it's very short). And it is a cool view, but you're a long way from the arch and the elevation gain is nearly the same as the trail to it.

Maps

Arches National Park Map: [PDF](#) | [JPG](#)

Google Map w/ Trails and Attractions

All 63 National Parks Map: [PDF](#) | [JPG](#)

Southwestern NPS Units Map: [PDF](#) | [JPG](#)

Highlights

Fiery Furnace
The Park Road
Windows
Balanced Rock
Park Avenue Viewpoint
Skyline Arch



Favorite Trails

Easy

[The Windows](#)
[Landscape Arch](#)
[Skyline Arch](#)
[Broken Arch](#)
[Double Arch](#)
[Balanced Rock](#)

Moderate

[Delicate Arch](#)
[Sand Dune Arch Loop](#)
[Park Avenue](#)
[Tower Arch](#)

Strenuous

[Devil's Garden](#)

Activities

Hiking
 Backpacking
 Biking
 Rock Climbing

See this [Google Map](#) for pins to favorite trails and attractions.

Highlights

[Colorado NM](#) (CO)
[Fisher Towers](#) (UT)

[Mirror Lake Scenic Byway](#) (UT)
[\(Uinta-Wasatch-Cache NF\)](#)

[Dinosaur NM](#) (CO)

[Canyon de Chelly NM](#) (AZ)
[Monument Valley](#) (AZ)
[Gooseheads SP](#) (UT)
[Valley of the Gods](#) (UT)

There's a major obstacle to the north in the form of the San Rafael Swell and the Green River, but this region is a great deal of fun, and it's almost all public land. I only included easy-to-get-to places. There's a lot of dirt roads out here.

Road Trip

Here's a [Google Map](#) to help plan road trips from the east (Black Canyon of the Gunnison), north (Uinta Mountains/Dinosaur NM), west (Canyonlands), and south (Petrified Forest). It's a good start, but I'd recommend making your own.

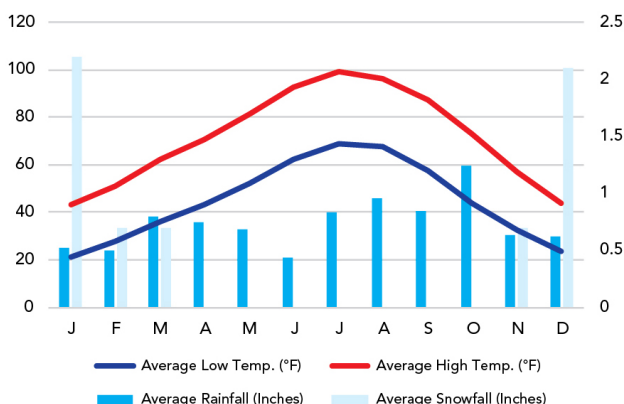
There's much more to our country. Here's another [Google Map](#) with points of interest across all types of public land.

For campers, here's a [Google Map](#) with National Forest campgrounds. National Park campgrounds are difficult to reserve (there are about 200!). With nearly 5,000 national forest campgrounds, you can usually pull in and find a spot.

When To Go

Weather

Arches National Park: 4,092 ft Elevation



Visitation

Arches Visitation

