



## Badlands National Park Trip Assistant

### How Much Time?

There's only about 10 miles of hiking trails here and Badlands Loop Road is about 40 miles. So, it's possible to hike all the official trails and drive the paved road in a day. Is that a good idea? Possibly. The thing is, this place is really pretty, and you really want to be here for a couple sunrises and sunsets, and get a little off the beaten path. Sage Creek Rim Road is fantastic, a great

place for spotting wildlife. With a high-clearance 4x4 you can drive up Sheep Mountain Table, which provides some spectacular views (although it's gotten awfully rutted up up there over the years). And then you can get a good of badlands relatively few visitors see by heading over to Red Shirt Table, which also sets you up nicely to get to Wind Cave National Park and Custer State Park.

### Need to Know

- Making a quick detour from I-90, driving Badlands Loop Road will take about an hour.
- Almost everyone visits in summer, but summer is very hot.
- There's quite a bit more to see and do. Some really great trails and lots of fantastic overlooks and wildlife.
- If the campgrounds are full, you can camp for free on Forest Service land north of Pinnacles Entrance.

### Maps

Badlands National Park Map: [PDF](#) | [JPG](#)

Region: [PDF](#) | [JPG](#)

Detail: [PDF](#) | [JPG](#)

### [Google Map w/ Trails and Attractions](#)

All 63 National Parks Map: [PDF](#) | [JPG](#)

Northern National Park Service Units Map: [PDF](#) | [JPG](#)

### Highlights

Badlands Loop Road

Castle

Big Badlands Overlook

Hay Butte Overlook

Roberts Prairie Dog Town

Sage Creek Rim Road

Sheep Mountain Table

Red Shirt Table Overlook

Panorama Point

Pinnacles Overlook

Fossil Exhibit

White River Valley Overlook



## Favorite Trails

**Easy**

**Door**

**Fossil Exhibit**

**Cliff Shelf**

**Moderate**

**Notch**

**Castle**

**Strenuous**

**Saddle Pass**

## Activities

Hiking

Biking

Horseback Riding

Stargazing

See this [Google Map](#) for pins to all favorite trails and attractions.

## Road Trip

Here's a [Google Map](#) to help plan road trips from the east (Milwaukee, WI), north (Theodore Roosevelt), west (Wind Cave), and south (Scott's Bluff NM). It's a good start, but I'd highly recommend making your own.

There's much more to our country. Here's another [Google Map](#) with points of interest across all types of public land.

For campers, here's a [Google Map](#) with National Forest campgrounds. National Park campgrounds are difficult to reserve (there are about 200!). With nearly 5,000 national forest campgrounds, you can usually pull in and find a spot.

## Highlights

[Devil's Lake State Park](#) (WI)

[Devil's Tower NM](#) (WY)

[Spearfish Canyon](#) (SD)

(see Wind Cave National Park for more highlights in South Dakota's Black Hills)

[Toadstool Geological Park](#)

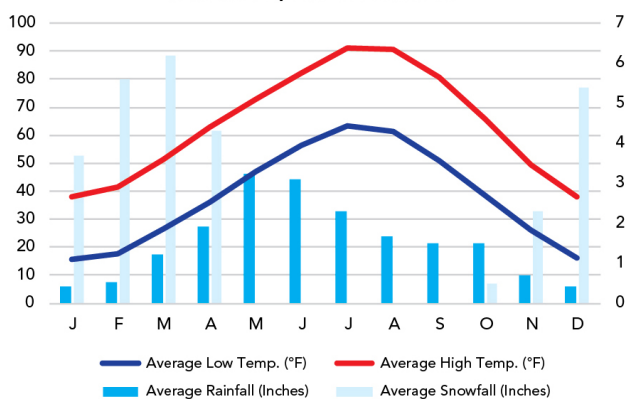
(NE)

(Oglala National Forest)

## When To Go

### Weather

Interior: 2,439 ft Elevation



### Visitation

Badlands Visitation

