



## Big Bend National Park Trip Assistant

### How Much Time?

It takes some effort to get here, so you ought to plan on sticking around for a while! If it's summer, you want to hang out in the Chisos Mountains, exploring the South Rim.

Hit the highlights. Regardless when you visit, the Chisos Mountains area should be priority 1. Then move on to the canyons on each end of the park. Mix in Mariscal too, if you

have a 4x4. And, if that's the case and you don't mind primitive camping, consider giving it a go. There are some fantastic sites here. And you'll experience some of the country's darkest skies!

It wouldn't be difficult to spend an enjoyable week hiking here. Big Bend Ranch State Park is worth checking out too. And then you can go across the border into Mexico.

### Need to Know

- **Reservations** are required for campsites (except a handful of primitive roadside campsites).
- Come prepared. There's a gas station and camp stores in the park, but you really want to bring everything you need.
- This is an excellent off-roading park. Here, you really need to be prepared! Be ready for self-rescue or have a reliable communication device. A tow will cost you some serious \$!

### Maps

Big Bend National Park Map: [PDF](#) | [JPG](#)  
Region: [PDF](#) | [JPG](#)

### Google Map w/ Trails and Attractions

All 63 National Parks Map: [PDF](#) | [JPG](#)  
Southern National Park Service Units Map: [PDF](#) | [JPG](#)

### Highlights

Chisos Mountains  
Santa Elena Canyon  
Boquillas Canyon  
Primitive Roadside Campsites  
Ross Maxwell Scenic Drive  
Old Maverick Road  
River Road (4x4)



## Favorite Trails

### Easy

[Santa Elena Canyon](#)

[Ward Spring](#)

[Ernst Tinaja](#)

[Hot Springs](#)

### Moderate

[Dog Canyon](#)

[Devil's Den](#)

[Grapevine Hills](#)

[Lost Mine](#)

[Window](#)

[Boquillas Canyon](#)

[Ore Terminal](#)

### Strenuous

[South Rim](#)

[Mariscal Canyon](#)

[Marufo Vega](#)

[Emory Peak](#)

## Activities

Hiking

Backpacking

Biking

Paddling/Rafting

Stargazing

Birdwatching

See this [Google Map](#) for pins to favorite trails and attractions.

## Highlights

[Brazos Bend State Park](#) (TX)

[The Alamo](#) (TX)

[River Walk](#) (TX)

[Garner State Park](#) (TX)

[Kickapoo Cavern SP](#) (TX)

[Devil's River](#) (TX)

[Seminol Canyon SP](#) (TX)

[Balmorhea SP](#) (TX)

[Davis Mountains SP](#) (TX)

[Fort Leaton SHS](#) (TX)

[Big Bend Ranch SP](#) (TX)

South Padre Island and Starbase, TX (if there's a rocket launch) are worth considering, but it's a drive.

## Road Trip

Here's a [Google Map](#) to help plan road trips from the east (Houston, TX), north (Carlsbad Caverns), and west (El Paso, TX). It's a good start, but I'd highly recommend making your own.

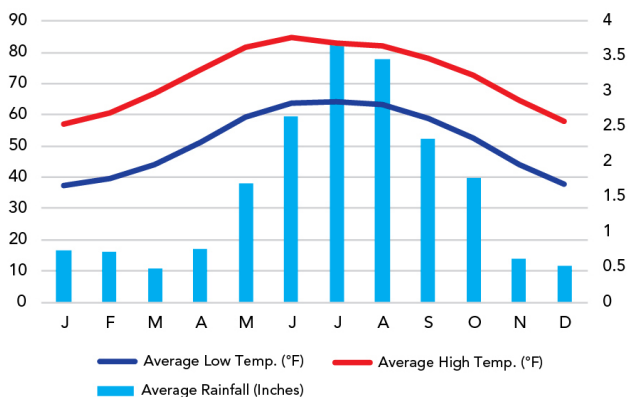
There's much more to our country. Here's another [Google Map](#) with points of interest across all types of public land.

For campers, here's a [Google Map](#) with National Forest campgrounds. National Park campgrounds are difficult to reserve (there are about 200!). With nearly 5,000 national forest campgrounds, you can usually pull in and find a spot.

## When To Go

### Weather

Chisos Basin: 5,298 ft Elevation



### Visitation

Big Bend Visitation

