

## Canyonlands National Park Trip Assistant

### How Much Time?

If you're just sight-seeing, a quick trip to Island in the Sky might be all you need. Just be warned, there can be a very long line of cars at the entrance in the middle of the day during peak season.

Now, if you like to hike, backpack, 4x4, and/or raft, you're going to want to stick

around for a while. The Maze is a 4x4/backpackers playground. Needles is the best hiking section. Island in the Sky offers a little bit of everything in addition to the most stunning, easily accessible views. While camping in the park is limited, there's quite a bit of adjacent BLM land where you'll find a few more options.

### Need to Know

- Relative to the size of the park and number of visitors, there are very few campsites (and most of them are first-come, first-served!). It's stupid.
- A permit is required for several 4x4 roads, including the popular White Rim Road. Fill up with gas before heading out on the dirt roads and be prepared for self rescue.
- Summers get quite hot during the middle of the day. Spring and fall tend to be the best times to visit, but winter can also be quite magical.

### Maps

Canyonlands National Park Map: [PDF](#) | [JPG](#)

#### [Google Map w/ Trails and Attractions](#)

All 63 National Parks Map: [PDF](#) | [JPG](#)

Southwestern NPS Units Map: [PDF](#) | [JPG](#)

### Highlights

#### [Island in the Sky](#)

Green River Overlook

Grand View

Buck Canyon Overlook

White Rim Road

#### [Needles](#)



## Favorite Trails

### Easy

[Grand View Point](#)  
[White Rim Overlook](#)  
[Moses and Zeus](#)  
[Murphy Point](#)  
[Mesa Arch](#)

### Moderate

## Whale Rock

### Strenuous

[Chesler Park](#) (+ Joint)  
[Peekaboo](#)  
[Druid Arch](#)  
[Syncline Loop](#)  
[Lost Canyon](#)  
[Confluence Overlook](#)

## Activities

Off-Roading  
Hiking  
Backpacking  
Biking  
Rafting  
Rock Climbing  
Horseback Riding

See this [Google Map](#) for pins to favorite trails and attractions.

## Road Trip

Here's a [Google Map](#) to help plan road trips from the east (Arches), north (Dinosaur NM & Uinta Mountains), west (Capitol Reef), and South (Petrified Forest). It's a good start, but I'd highly recommend making your own.

There's much more to our country. Here's another [Google Map](#) with points of interest across all types of public land.

For campers, here's a [Google Map](#) with National Forest campgrounds. National Park campgrounds are difficult to reserve (there are about 200!). With nearly 5,000 national forest campgrounds, you can usually pull in and find a spot.

## Highlights

[Dinosaur NM](#) (CO)

[Mirror Lake Scenic Byway](#) (UT)  
[\(Uinta-Wasatch-Cache NF\)](#)

[Factory Butte](#) (UT)  
[Goblin Valley SP](#) (UT)  
[Little Wildhorse Canyon](#) (UT)

[Leprechaun Canyon](#) (UT)  
[Hite Overlook](#) (UT)

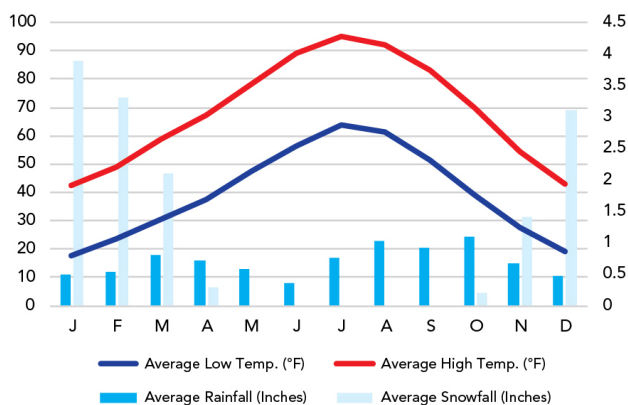
[Canyon de Chelly NM](#) (AZ)

UT-24 and UT-95 are littered with beautiful attractions!

## When To Go

### Weather

Needles District: 4,904 ft Elevation



### Visitation

Canyonlands Visitation

