



Capitol Reef National Park Trip Assistant

How Much Time?

I love this park! It offers a little something from each of the four other Utah National Parks with smaller crowds. The smaller crowds I suppose are because most of the best sites are accessed via unpaved roads. So, if you aren't leaving pavement, it doesn't take a whole heck of a lot of time to drive UT-24 (totally awesome) and scenic drive (and maybe hike something like Grand Wash and Chimney Rock/Spring Canyon).

That would be an amazing day! Now, if your vehicle is quite capable, you want to take Hartnet Road through Bentonite Hills to the tiny, two-car corral for Cathedral Valley Overlook. And do the full Cathedral Valley Loop (it gets a little hairy back by the primitive campground), and stop at Temple of the Sun and Moon too. Burr Trail is awesome and gets you to exciting trails like Upper Muley Twist. And then there are backpacking trips like Halls Creek Narrows, which I'm still itching to do.

Need to Know

- Spring and fall tend to be the most comfortable seasons. Visit in summer, and you'll want to stay in the slot canyons. It'll be hot in the middle of the day. Winter can be nice.
- Before heading out on 4x4 roads, call (435) 425-3791 (press 1 then 4) for conditions.

Maps

Capitol Reef National Park Map: [PDF](#) | [JPG](#)
Fruita District: [PDF](#) | [JPG](#)

[Google Map w/ Trails and Attractions](#)

All 63 National Parks Map: [PDF](#) | [JPG](#)
Southwestern NPS Units Map: [PDF](#) | [JPG](#)

Highlights

UT-24
Scenic Drive
Temple of the Sun/Moon (4x4)
Burr Trail (unpaved)
Nottom-Bullfrog Road (unpaved)
Bentonite Hills (North Blue Flats)
Fruita



Favorite Trails

Easy

[Grand Wash](#)

[Capitol Gorge](#)

[Goosenecks](#)

Moderate

[Lower Cathedral Valley](#)

[Overlook](#)

[Chimney Rock/Spring Can-](#)

[yon](#) (out-and-back is fine)

[Golden Throne](#)

[Cohab Canyon](#)

[Hickman Bridge](#)

[Headquarters Canyon](#)

[Burro Wash](#) (gets technical)

Strenuous

[Cassidy Arch](#)

[Sulphur Creek](#)

[Rim Overlook](#)

Activities

Off-Roading

Hiking

Backpacking

Biking

Rock Climbing

Canyoneering

Horseback Riding

Stargazing

See this [Google Map](#) for pins to favorite trails and attractions.

Highlights

[UT-95](#) & [UT-24](#) (They're both fantastic!)

[Goblin Valley SP](#) (UT)

[Factory Butte](#) (UT)

[Hole-in-the-Rock Road](#) (Zebra, Peek-a-Boo, & Spooky slots, Jacob Hamblin Arch, Reflection Canyon, etc.) The only problem is Hole-in-the-Rock Road is unpaved and absolutely atrocious wash-board. If you're comfortable camping primitively, spend a few nights here.

[Lower Calf Creek Falls](#) (UT)

[Boulder Mail Trail](#) (UT)

Road Trip

Here's a [Google Map](#) to help plan road trips from the east (Canyonlands), north (Uinta Mountains), west (Great Basin), and south (Bryce Canyon). It's a good start, but I'd highly recommend making your own.

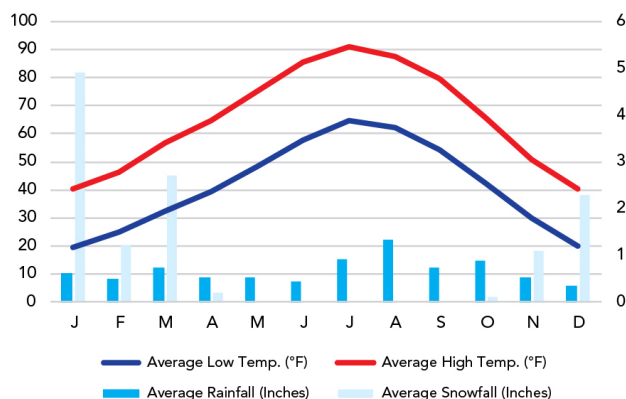
There's much more to our country. Here's another [Google Map](#) with points of interest across all types of public land.

For campers, here's a [Google Map](#) with National Forest campgrounds. National Park campgrounds are difficult to reserve (there are about 200!). With nearly 5,000 national forest campgrounds, you can usually pull in and find a spot.

When To Go

Weather

Capitol Reef National Park: 5,499 ft Elevation



Visitation

Capitol Reef Visitation

