

## Channel Islands National Park Trip Assistant

### How Much Time?

You don't spontaneously visit. This one needs to be planned out. The vast majority of visitors only make daytrips to the islands (typically Anacapa or Santa Cruz), but each island has a campground for you to make an

island backpacking adventure of the trip.

Unless you're a local, what you can do will be dictated by [Island Packers ferry schedule](#). And regardless what island(s) you visit, you'll likely be treated to plenty of marine life along the way!

### Need to Know

- The park is open year-round. Weather is usually comfortable. High winds, fog, and rain can complicate your visit, but rarely interfere with transportation.
- Most [Island Packers tours](#) are full-day affairs, but they also offer express tours if you're short on time.
- If you're interested in camping, be sure to check camping and ferry availability at the same time. Campsites book pretty quickly for summer.
- Campsites have food storage boxes (to keep the critters out). Use them.

### Maps

Channel Islands National Park Map: [PDF](#) | [JPG](#)

[Google Map w/ Trails and Attractions](#)

All 63 National Parks Map: [PDF](#) | [JPG](#)

Western National Park Service Units Map: [PDF](#) | [JPG](#)

### Highlights

Kelp Forests  
Painted Cave  
Marine Life!  
Sea Kayaking  
Caliche Forest  
Arch Rock



## Favorite Trails

### Moderate

[Pelican Bay](#) (Santa Cruz)

[Potato Harbor](#) (Santa Cruz)

## Road Trip

Here's a [Google Map](#) to help plan road trips from the east (Joshua Tree), north (Sequoia), northwest (Redwood), and south (San Diego, CA). It's a good start, but I'd highly recommend making your own.

There's much more to our country. Here's another [Google Map](#) with points of interest across all types of public land.

For campers, here's a [Google Map](#) with National Forest campgrounds. National Park campgrounds are difficult to reserve (there are about 200!). With nearly 5,000 national forest campgrounds, you can usually pull in and find a spot.

## Activities

Paddling  
Swimming  
Sailing  
SCUBA Diving  
Hiking  
Backpacking

See this [Google Map](#) for pins to favorite trails and attractions.

## Highlights

[Ladder Canyon](#) (CA)

[Tahquitz Falls](#) (CA)

[Palms-to-Pines Hwy](#) (CA)

[\(San Bernardino NF\)](#)

[Angeles National Forest](#) (CA)

[Topanga SP](#) (CA)

[Tule River Cliff Diving](#) (CA)

[Avenue of the Giants](#) (CA)

[Russian Gulch SP](#) (CA)

[Golden Gate NRA](#) (CA)

[Shark Fin Cove](#) (CA)

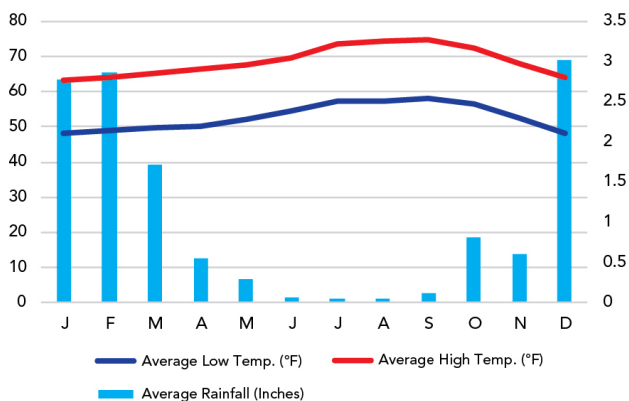
[Crystal Cove SP](#) (CA)

There's a lot more on the [POI map](#)! Check it out!

## When To Go

### Weather

San Nicolas Island: 529 ft Elevation



### Visitation

Channel Islands Visitation

