



## Crater Lake National Park Trip Assistant

### How Much Time?

You don't need much. Rim Drive is 33 miles. Garfield Peak and Watchman Overlook are the two must-hikes! And you should try to get tickets for a [boat tour](#). If you're a photographer, I could see sticking around for

a couple nights to try and get an amazing sunrise/sunset shot. But, other than that, I'd be looking to move it along. There are a TON of incredible waterfalls in this area as well as lava tubes, and even some good whitewater rafting.

### Need to Know

- Most roads and facilities are closed fall through spring.
- The road to Rim Village remains plowed through winter. And it's pretty neat to see this place buried in snow.
- It's a good idea to drive the rim clockwise. That way all the overlooks will be on your right.

### Maps

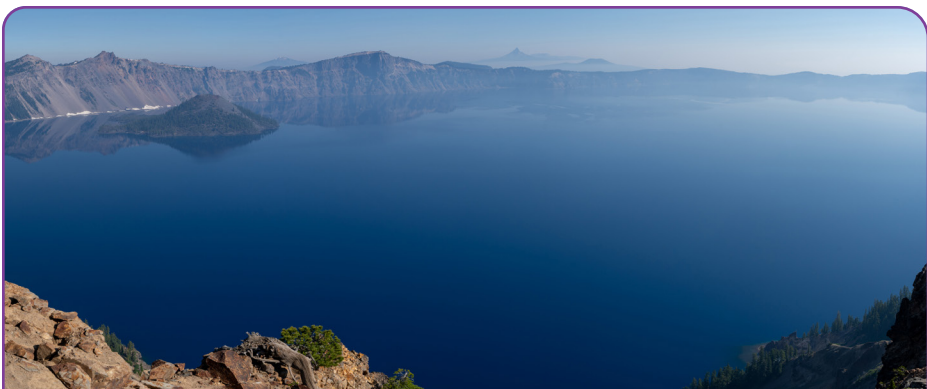
Crater Lake National Park Map: [PDF](#) | [JPG](#)  
Region: [PDF](#) | [JPG](#)

### [Google Map w/ Trails and Attractions](#)

All 63 National Parks Map: [PDF](#) | [JPG](#)  
Western National Park Service Units Map: [PDF](#) | [JPG](#)

### Highlights

West/East Rim Drive  
Sinnott Memorial Overlook  
Discovery Point  
Watchman Overlook  
Phantom Ship Overlook  
Vidae Falls  
The Pinnacles



## Favorite Trails

### Easy

[Discovery Point](#)

### Moderate

[Watchman Peak](#)

## Wizard Summit

### Strenuous

[Garfield Peak](#)

[Mount Scott](#)

[Cleetwood Cove](#)

## Activities

Hiking  
Backpacking  
Guided Tours  
Biking  
Fishing  
Swimming  
Cross-country Skiing  
Snowshoeing

See this [Google Map](#) for pins to favorite trails and attractions.

## Road Trip

Here's a [Google Map](#) to help plan road trips from the east (West Yellowstone—need to update), north (Mount Rainier), west (Oregon Coast), and south (Lassen Volcanic). It's a good start, but I'd highly recommend making your own.

There's much more to our country. Here's another [Google Map](#) with points of interest across all types of public land.

For campers, here's a [Google Map](#) with National Forest campgrounds. National Park campgrounds are difficult to reserve (there are about 200!). With nearly 5,000 national forest campgrounds, you can usually pull in and find a spot.

## Highlights

[Sawtooth NF](#) (ID)

[Lake Owyhee SP](#) (OR)

[Leslie Gulch](#) (4x4) (OR)

[The Cove Palisades SP](#) (OR)

[Proxy Falls](#) (OR)

[Salt Creek Falls](#) (OR)

[Mount St. Helens](#) (WA)

[Falls Creek Falls](#) (WA)

[Columbia River Gorge](#) (OR)

[Mount Hood](#) (OR)

[Watson Falls](#) (OR)

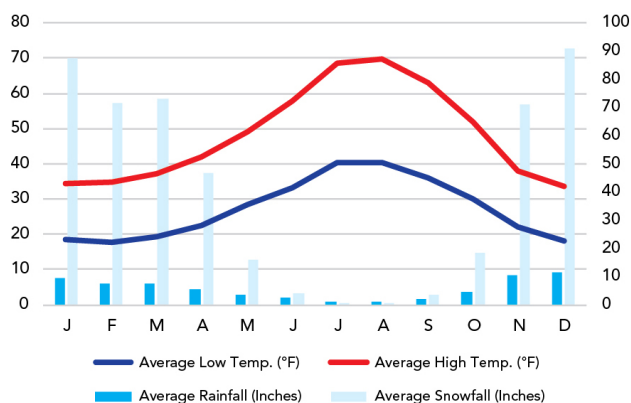
[Lemolo Falls](#) (OR)

[Lava Beds NM](#) (CA)

## When To Go

### Weather

Park Headquarters: 6,483 ft Elevation



### Visitation

Crater Lake Visitation

