



Denali National Park Trip Assistant

How Much Time?

As things are now (the park road being closed at Mile 43), I wouldn't spend much time here unless you splurge and fly in to Kantishna and stay at one of the backcountry lodges (but that costs \$\$\$\$). While you'll have the opportunity for decent Denali views driving up

to the park, but all the best views from Denali Park Road are beyond Mile 43 (at spots like Stony Hill, Eielson Visitor Center, Reflection Pond, etc.). It's even worth considering postponing a trip here until the \$100M suspension bridge is complete.

Need to Know

- Park Road is closed at Mile 43 until summer 2025 (at the earliest).
- You can still fly into Kantishna and stay at one of the backcountry lodges.
- You can only drive to mile 15 of Park Road. The rest is restricted to park/lodge buses and shuttles and Teklanika River campers.
- [Tour/Transit buses](#) typically run from mid-May until mid-September.

Maps

Denali National Park Map: [PDF](#) | [JPG](#)
Detail: [PDF](#) | [JPG](#)

[Google Map w/ Trails and Attractions](#)

All 63 National Parks Map: [PDF](#) | [JPG](#)
Alaska National Park Service Units Map: [PDF](#) | [JPG](#)

Highlights

Denali/McKinley (whatever you want to call it :)
Stony Hill
Reflection Pond
Sled Dog Demonstrations
Wonder Lake
Park Road



Favorite Trails

It's mostly trailless wilderness, but the one hike to do is [Eielson Alpine](#).

Road Trip

Here's a [Google Map](#) with a road trip to the three road-accessible Alaskan National Parks.

There's much more to our country. Here's another [Google Map](#) with points of interest across all types of public land.

For campers, here's a [Google Map](#) with National Forest campgrounds. National Park campgrounds are difficult to reserve (there are about 200!). With nearly 5,000 national forest campgrounds, you can usually pull in and find a spot.

Activities

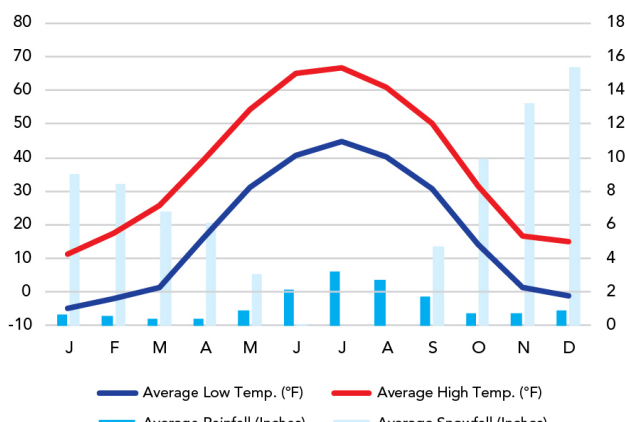
[Bus/Shuttle Tours](#)
[Hiking](#)
[Backpacking](#)
[Mountaineering](#)
[Whitewater Rafting](#)
[Biking](#)
[Flightseeing](#)
[Fishing](#)

See this [Google Map](#) for pins to trails and attractions.

When To Go

Weather

McKinley Park: 2,069 ft Elevation



Visitation

Denali Visitation

