



Death Valley National Park Trip Assistant

How Much Time?

The park is 3.4 million acres. Most people just drop in on their way between L.A. and Las Vegas. Unless it's summer, that's a huge mistake. With that said, if you don't have a 4x4 and/or aren't interested in hiking, you won't need that much time. With a 4x4 and plenty of money for fuel, you could spend

weeks here and not get sick of it.

At a minimum, spend one night to enjoy sunrise/sunset at Mesquite Flat Sand Dunes, and check out some of the highlights. There are quite a few overnight accommodations in the park and unlike most parks, camping is mostly first-come, first served (and usually available).

Need to Know

- Elevation varies from 282 feet below sea level to 11,049 feet. In summer, it can be over 100°F on the valley floor and in the 70s°F at the summit of Telescope Peak. Come prepared for varied weather, and be sure to acclimate to elevation.
- Gas, food, and water are available at Panamint Springs, Stovepipe Wells, and Furnace Creek.
- Superblooms depend on winter rain. If you're hoping for flowers, check with the park about status.

Maps

Death Valley National Park Map: [PDF](#) | [JPG](#)
Furnace Creek: [PDF](#) | [JPG](#)

[Google Map w/ Trails and Attractions](#)

All 63 National Parks Map: [PDF](#) | [JPG](#)
Western National Park Service Units Map: [PDF](#) | [JPG](#)

Highlights

Mesquite Flat Sand Dunes
Badwater
Zabriskie Point
Eureka Dunes
Dante's View
Titus Canyon Road
The Racetrack



Favorite Trails

Easy

[Badwater Salt Flat](#)

[Golden Canyon](#)

[Natural Bridge](#)

[Astists Palette](#)

[Salt Creek](#)

Moderate

[Mesquite Flat Sand Dunes](#)

[Golden Canyon/Gower Gulch](#)

[Mosaic Canyon](#)

[Lower Darwin Falls](#)

[Dante's Ridge](#)

Strenuous

[Telescope Peak](#)

[Fall Canyon](#)

Activities

Off-Roading

Hiking

Backpacking

Biking

Horseback Riding

Birdwatching

Stargazing

See this [Google Map](#) for pins to favorite trails and attractions.

Highlights

[Red Rock Canyon NCA](#) (NV)

[Mount Charleston](#) (NV)

[\(Spring Mountains NRA\)](#)

[Diana's Punch Bowl](#) (NV)

[Parker Lake, June Lake,](#)

[Convict Lake, Big Pine](#)

[Lakes](#), Palisades, Minarets,

[Whitney Portal](#), etc.

[\(Inyo National Forest\)](#)

[Alabama Hills](#)

[Mojave Nat'l Preserve](#) (CA)

A lifetime probably isn't enough for the Eastern Sierra.

Road Trip

Here's a [Google Map](#) to help plan road trips from the east (Las Vegas, NV), north (middle of nowhere, NV), west (Yosemite), and south (Joshua Tree). It's a good start, but I'd highly recommend making your own.

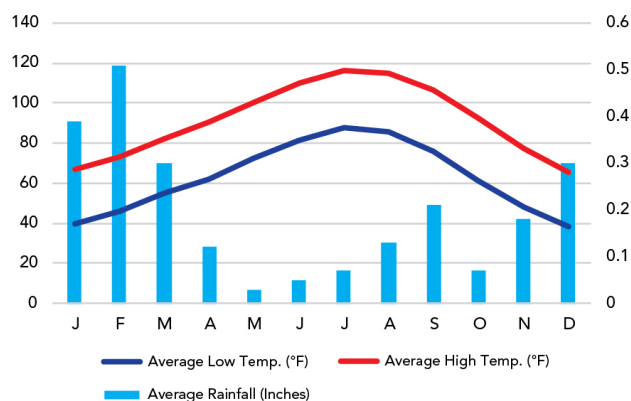
There's much more to our country. Here's another [Google Map](#) with points of interest across all types of public land.

For campers, here's a [Google Map](#) with National Forest campgrounds. National Park campgrounds are difficult to reserve (there are about 200!). With nearly 5,000 national forest campgrounds, you can usually pull in and find a spot.

When To Go

Weather

Furnace Creek: -194 ft Elevation



Visitation

Death Valley Visitation

