



## Everglades National Park Trip Assistant

### How Much Time?

With one day, start at Shark Valley. Take the tram or rent a bike to complete the 15-mile loop. If you just want to quickly gawk at some gators, walk along the west half of the loop, looking into the narrow waterway that parallels the road. It's usually filled with gators (and birds). Then make the drive down toward Flamingo to hike Anhinga Trail.

With more time, you should consider joining a boat tour at Flamingo (or Thousand Islands), renting kayaks or canoes to paddle (Turner River near Thousand Islands) or something like West Lake near Flamingo. There is a Nike Missile Base here and the park offers tours. If that's something you're interested in, check the park's [calendar of events](#).

### Need to Know

- The best gator-spotting spots are Shark Valley, along Tamiami Highway (US-41), and Anhinga Trail
- Vultures are common at Anhinga Trail Parking area. Some visitors cover their vehicles with tarp to protect the rubber seals vultures like to pick at and eat.

### Maps

Everglades National Park Map: [PDF](#) | [JPG](#)

[Google Map w/ Trails, Attractions, and Outfitters](#)

All 63 National Parks Map: [PDF](#) | [JPG](#)

Eastern National Park Service Units Map: [PDF](#) | [JPG](#)

### Highlights

Shark Valley  
Flamingo  
Whitewater Bay  
Nike Missile Base  
Thousand Islands  
Florida Bay





## Favorite Trails

**Easy**  
Anhinga

**Moderate**  
Shark Loop Road

## Activities

Paddling  
Boat Tours  
Fishing  
Biking  
Hiking  
Birdwatching

See this [Google Map](#) for pins to area outfitters offering tours and rentals as well as all favorite trails and attractions.

## Road Trip

Here's a [Google Map](#) to help plan road trips from the north (Congaree), Gulf, and south (Dry Tortugas). It's a good start, but I'd highly recommend making your own.

There's much more to our country. Here's another [Google Map](#) with points of interest across all types of public land.

For campers, here's a [Google Map](#) with National Forest campgrounds. National Park campgrounds are difficult to reserve (there are about 200!). With nearly 5,000 national forest campgrounds, you can usually pull in and find a spot.

## Highlights

Devil's Ear Spring (FL)  
Blue Spring State Park (FL)  
Bill Baggs State Park (FL)

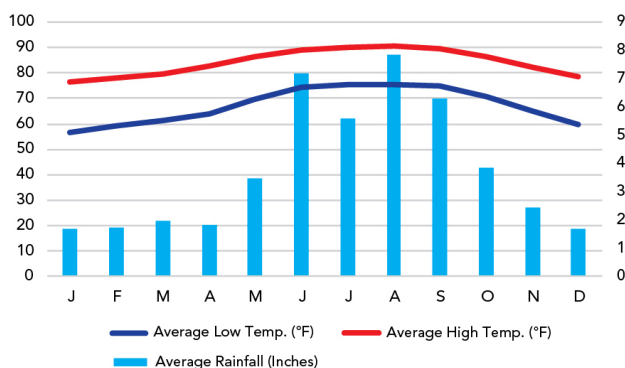
Lover's Key State Park (FL)  
Delnor Wiggins Pass SP (FL)

Long Key State Park (FL)  
Curry Hammock SP (FL)  
Bahia Honda SP (FL)

## When To Go

### Weather

Flamingo Ranger Station: 3 ft Elevation



### Visitation

Everglades Visitation

