



## Gates of the Arctic National Park Trip Assistant

### How Much Time?

Most people fly in (or over) and never spend more than an hour in the park (which is more than 8 million acres). Others, spend weeks slowly rafting its rivers, but you require a fairly unique set of skills.

### Need to Know

- The entire park is above the Arctic Circle, so summer is not only the prime time to visit, it's realistically the only time to visit.
- Air taxis fly out of Bettles, Coldfoot, and Anaktuvuk Pass. Each of those sites can be reached by flights out of Fairbanks.
- While you can hike into the park from the highway, it's not a particularly good idea. For a good time, you're likely better off flying into the Arrigetch Peaks area or getting dropped off for a packrafting trip.

### Maps

Gates of the Arctic National Park Map: [PDF](#) | [JPG](#)

[Google Map w/ Attractions](#)

All 63 National Parks Map: [PDF](#) | [JPG](#)

Alaska National Park Service Units Map: [PDF](#) | [JPG](#)

### Highlights

Arrigetch Peaks  
Gates of the Arctic  
Koyukuk River  
Oolah Pass  
Kobuk River  
Tinayguk River





## Favorite Trails

Gates of the Arctic is a mostly trailless wilderness.

## Road Trip

You don't get here by road!

There's much more to our country. Here's another [Google Map](#) with points of interest across all types of public land.

For campers, here's a [Google Map](#) with National Forest campgrounds. National Park campgrounds are difficult to reserve (there are about 200!). With nearly 5,000 national forest campgrounds, you can usually pull in and find a spot.

## Activities

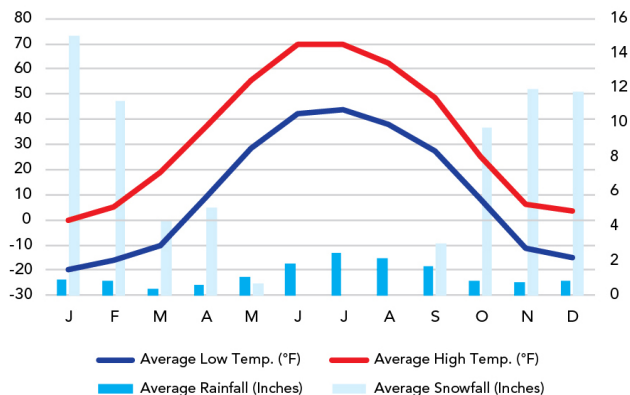
Backpacking  
Packrafting  
Flightseeing  
Hunting  
Fishing

See this [Google Map](#) for pins to attractions.

## When To Go

### Weather

Wiseman: 1,181 ft Elevation



### Visitation

Gates of the Arctic Visitation

