

Glacier National Park Trip Assistant

How Much Time?

How much time do you have? Even with more than half a million visitors per month from June through September, I could spend years hiking here and never tire of it. Non-hikers might feel differently.

I feel like three days is a minimum. Three days in Many Glacier alone probably won't feel like enough, and you want at least a day to explore Going-to-the-Sun Road, another day at Two Medicine, and if you like backpacking or long dayhikers, another

day spent along North Fork Road to do the semi-loop around Bowman and Kintla Lakes.

If you aren't into backpacking, there are unique backcountry chalets from the railroad's early days. [Granite Park Chalet](#) gets you close to scenic viewpoints like Grinnell Glacier Overlook and Swiftcurrent Lookout. [Sperry Chalet](#) gets you close to Sperry Glacier and Lake Ellen-Wilson/Gunsight Pass. People love this place. Get an early start or use the [free park shuttle](#).

Need to Know

- [Reservations](#) are required for camping. (It's not easy getting these sites.)
- Going-to-the-Sun Road typically opens fully in late June/early July, but there's still a lot to do before that, and these mountains are even more magnificent covered in snow.
- US-2 is open year-round.
- [Timed-Entry tickets](#) are required for the west entrance of Going-to-the-Sun Road, North Fork Road, and Many Glacier (when it reopens fully in 2026).
- Timed-entry does not guarantee parking. Logan Pass typically fills by 8am.

Maps

Glacier National Park Map: [PDF](#) | [JPG](#)

Region: [PDF](#) | [JPG](#)

Apgar: [PDF](#) | [JPG](#)

St. Mary: [PDF](#) | [JPG](#)

Waterton Lakes: [PDF](#) | [JPG](#)

[Google Map w/ Trails, Attractions, and Outfitters](#)

All 63 National Parks Map: [PDF](#) | [JPG](#)

Northern National Park Service Units Map: [PDF](#) | [JPG](#)

Highlights

Many Glacier
Two Medicine
Going-to-the-Sun Road
Lake McDonald
St. Mary Lake
Bowman Lake
Kintla Lake
Goat Haunt

Favorite Trails

Easy

[Redrock Falls](#)
[Apikuni Falls](#)
[St. Mary's & Virginia Falls](#)
[Running Eagle Falls](#)
[Baring Falls](#)
[Sun Point](#)
[Aster Park](#)
[Twin Falls](#)

Moderate

[Grinnell Glacier](#)
[Hidden Lake Overlook](#)
[Iceberg Lake](#)
[Cracker Lake](#)
[Lake Francis](#)

[Avalanche Lake](#)

[Redgap Pass](#)
[Bowman Lake](#)
[Quartz Lake](#)
[Piegan Pass](#)
[Cobalt Lake](#)
[Lincoln Lake](#)
[Apgar Lookout](#)

Strenuous

[Swiftcurrent Lookout](#)
[Pitamakan-Dawson Loop](#)
[Gunsight Pass](#)
[Highline](#)
[Ptarmigan Tunnel](#)
[Sperry Chalet/Glacier](#)
[Siyeh Pass](#)

Activities

Hiking
Backpacking
Red Jammer Tours
Boat Tours
Fishing
Horseback Riding
Biking
Cross-country Skiing
Snowshoeing

See this [Google Map](#) for pins to favorite trails and attractions.

Road Trip

Here's a [Google Map](#) to help plan road trips from the east (Theodore Roosevelt), west (North Cascades), and south (Yellowstone). (Will make the map once roads are open in summer.)

There's much more to our country. Here's another [Google Map](#) with points of interest across all types of public land.

For campers, here's a [Google Map](#) with National Forest campgrounds. National Park campgrounds are difficult to reserve (there are about 200!). With nearly 5,000 national forest campgrounds, you can usually pull in and find a spot.

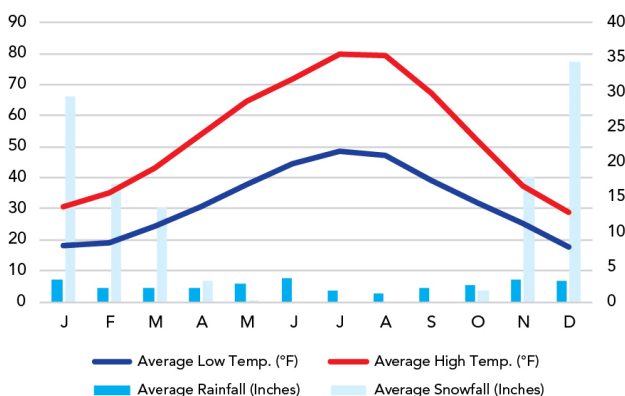
Highlights

Will update this in summer when I can complete the Road Trip map when all the high elevation roads open up for the year—stay tuned! There are many amazing places in the area like Bitterroot National Forest and most of Idaho!

When To Go

Weather

West Glacier: 3,147 ft Elevation



Visitation

Glacier Visitation

