



## Great Basin National Park Trip Assistant

### How Much Time?

If you only spend a day, hikers will likely have to choose between Wheeler Peak or Bristlecone Grove. And you'll have to make sure you're acclimated to the elevation for either of them.

Or spend a couple nights, enjoy the stars, summit Wheeler Peak,

explore the Bristlecone Grove, and then tack on the loop around Baker and Johnson Lakes. Add in a [cave tour](#) and you have yourself a nice little national park trip here!

But, I'm sure you get it. The park isn't that big. There's only about 65 miles of trails. You don't need a lot of time here.

### Need to Know

- While visitation is light by most western National Park standards, [campgrounds](#) and [cave tours](#) fill regularly.
- The final nine miles of Wheeler Peak Scenic Drive closes for winter.
- If planning to summit Wheeler Peak, snow often sticks around into summer.
- There are a few 4x4 roads, unlocking corners of the park that few visitors take the time to see.
- Respect the bristlecones. Some have been living there for 1,000s of years.

### Maps

Great Basin National Park Map: [PDF](#) | [JPG](#)

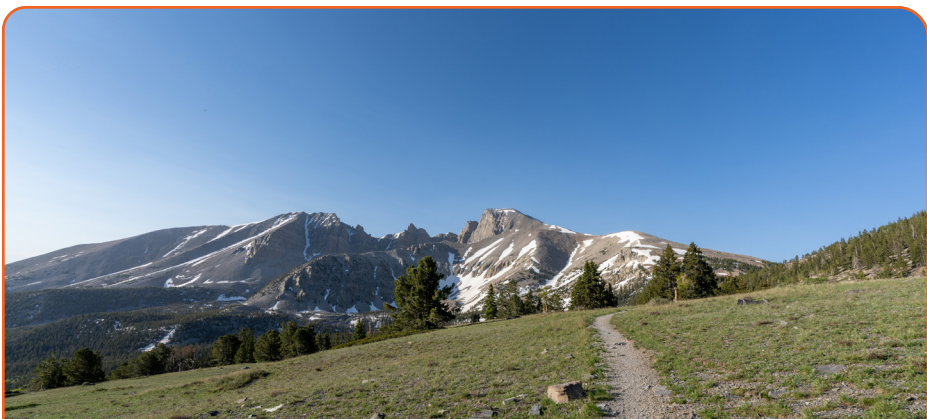
[Google Map w/ Trails and Attractions](#)

All 63 National Parks Map: [PDF](#) | [JPG](#)

Southwestern NPS Units Map: [PDF](#) | [JPG](#)

### Highlights

Mather Overlook  
Lehman Cave  
Wheeler Peak Overlook  
Great Basin Visitor Center  
Snake Creek



## Favorite Trails

### Easy

[Alpine Lakes](#)

### Moderate

[Bristlecone](#)

## Lexington Arch

### Strenuous

[Wheeler Peak](#)

[Baker/Johnson Lakes](#)

## Activities

Hiking

Backpacking

### Cave Tours

Stargazing

Biking

Horseback Riding

Fishing

See this [Google Map](#) for pins to favorite trails and attractions.

## Highlights

[Mirror Lake Scenic Byway](#) (UT)  
([Uinta-Wasatch-Cache NF](#))

[Parker Lake](#) ([Inyo NF](#)) (CA)  
[Lunar Crater](#) (NV)

[Valley of Fire SP](#) (NV)  
[Cathedral Gorge SP](#) (NV)

I left the north route off because I have no clue what's up there. I know it's all high elevation, and southern Idaho is pretty great, and that Oregon/Idaho/Nevada corner is amazing, but beyond that I'm baffled.

## Road Trip

Here's a [Google Map](#) to help plan road trips from the east (Uinta Mountains), west (Yosemite), and south (Las Vegas, NV). It's a good start, but I'd highly recommend making your own. (Northern Nevada is a mystery to me.)

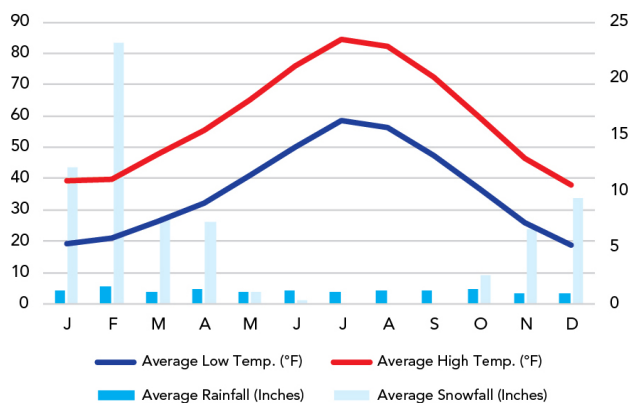
There's much more to our country. Here's another [Google Map](#) with points of interest across all types of public land.

For campers, here's a [Google Map](#) with National Forest campgrounds. National Park campgrounds are difficult to reserve (there are about 200!). With nearly 5,000 national forest campgrounds, you can usually pull in and find a spot.

## When To Go

### Weather

Great Basin National Park: 6,848 ft Elevation



### Visitation

Great Basin Visitation

