



Great Sand Dunes National Park Trip Assistant

How Much Time?

If you don't have a 4x4, one day is plenty to explore the dunesfield. Although it is infinitely fascinating watching the play of shadows and light as we rotate around the sun.

If you're hikers with a 4x4, then you think about driving Medano Pass Primitive Road. You

should come prepared to air down your tires. It's usually pretty sandy west of the dunes. There is an air pump near the start of the road by the RV dump station. There are primitive campsites along the road. You can also camp in the dunes, but you only want to do that on calm nights.

Need to Know

- Summer is the busiest. People come to relax in Medano Creek. But it's also very hot. And even on a warm day you won't want to walk barefoot in the sand. It's scorching.
- You'll be at elevation. Peaks rise above 13,000 feet, and the western lowlands remain above 7,500.
- Trails in the dunes aren't marked. Follow footsteps, blaze your own, or come prepared with a track on your phone.

Maps

Great Sand Dunes National Park Map: [PDF](#) | [JPG](#)
Region: [PDF](#) | [JPG](#)

[Google Map w/ Trails and Attractions](#)

All 63 National Parks Map: [PDF](#) | [JPG](#)
Southwestern NPS Units Map: [PDF](#) | [JPG](#)

Highlights

High Dune
Star Dune
Hidden Dune
Sand Pit
Medano Pass Primitive Road
(4x4)



Activities

Hiking
Backpacking
Sand Fun
Biking
Horseback Riding

See this [Google Map](#) for pins to favorite trails and attractions.

Favorite Trails

Moderate

[High Dune](#)
[Dunes Overlook](#)

Strenuous

[Mount Herard](#)
[Medano Lake](#)
[Music Pass](#)

Highlights

I'll update this once the roads open for summer. There are some fantastic areas like The Million Dollar Highway and CO-149, which cut through San Juan National Forest. And Rio Grande and Uncompahgre national forests aren't too shabby either.

Road Trip

Here's a [Google Map](#) to help plan road trips from the east (Oklahoma City, OK), north (Rocky Mountain), west (Black Canyon of the Gunnison), and south (White Sands). It's a good start, but I'd highly recommend making your own.

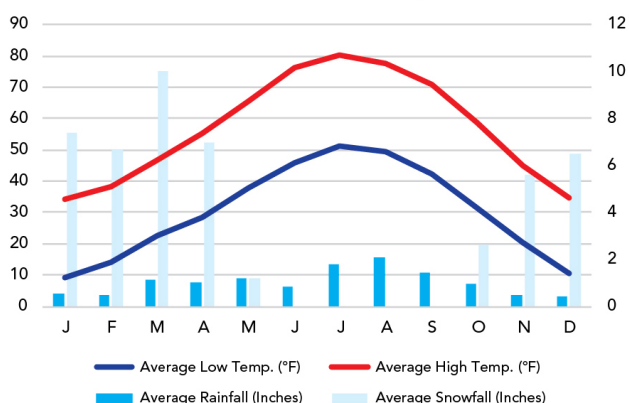
There's much more to our country. Here's another [Google Map](#) with points of interest across all types of public land.

For campers, here's a [Google Map](#) with National Forest campgrounds. National Park campgrounds are difficult to reserve (there are about 200!). With nearly 5,000 national forest campgrounds, you can usually pull in and find a spot.

When To Go

Weather

Great Sand Dunes National Park: 8,181 ft Elevation



Visitation

Great Sand Dunes Visitation

