



Guadalupe Mountains National Park Trip Assistant

How Much Time?

This little collection of National Parks (Guadalupe Mountains, Carlsbad Caverns, and White Sands) doesn't require a ton of time. Here, if you enjoy hiking, you focus on Guadalupe Peak, Devil's Hall, and Permian Reef (not necessarily in that order). McKittrick Canyon is good too. One night is what I do now. But, if you want to see each area, it takes

more time. Salt Basin Dunes, Williams Ranch, Pine Springs, McKittrick Canyon, and Dog Canyon all have their own access roads, and take quite a bit of time just to reach, much less explore, even though the park isn't all that big (considering you're in Texas :). If you're adding Big Bend to this trip, I'd maximize your time there, and do this with a little more haste.

Need to Know

- It gets busy here around spring break and again in fall when leaves start to change.
- You need to get a key from the visitor center to drive to Williams Ranch (4x4).
- If you're also going to White Sands while you're out here (which is a very good idea), skip Salt Basin Dunes. It's a long drive and usually very windy on that side of the mountain range. You'll see plenty of white sand at White Sands.

Maps

Guadalupe Mountains National Park Map: [PDF](#) | [JPG](#)

[Google Map w/ Trails and Attractions](#)

All 63 National Parks Map: [PDF](#) | [JPG](#)

Southern National Park Service Units Map: [PDF](#) | [JPG](#)

Highlights

McKittrick Canyon (Day-use only)
Pine Springs
Williams Ranch (4x4)
Salt Basin Dunes (Day-use only)
US-62 (there are some exceptional views and rest areas along the highway)



Favorite Trails

Moderate

Devil's Hall

McKittrick Canyon

Strenuous

Guadalupe Peak

Permian Reef

Lost Peak

The Bowl

Activities

Hiking

Backpacking

Stargazing

Horseback Riding

See this [Google Map](#) for pins to favorite trails and attractions.

Highlights

Organ Mountains-Desert

Peaks NM (NM)

Franklin Mountains SP (TX)

Hueco Tanks SP (TX)

Balmorhea SP (TX)

Davis Mountains SP (TX)

Road Trip

Here's a [Google Map](#) to help plan road trips from the north-east (Carlsbad Caverns), west (White Sands), and south (Big Bend). It's a good start, but I'd highly recommend making your own.

There's much more to our country. Here's another [Google Map](#) with points of interest across all types of public land.

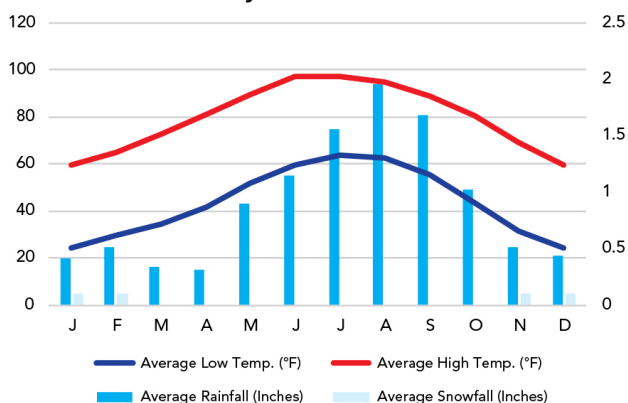
For campers, here's a [Google Map](#) with National Forest campgrounds. National Park campgrounds are difficult to reserve (there are about 200!). With nearly 5,000 national forest campgrounds, you can usually pull in and find a spot.

Everyone in this area likes to say, "if you're here, you're here for the park." It's kind of true. The region is pretty desolate, but there's oil and El Paso, and a few nearby attractions. And, twice a year you can tour the Trinity Site. There are some petroglyphs. Whether they're by modern man or ancient man, I'm not sure.

When To Go

Weather

Dell City: 3,707 ft Elevation



Visitation

Guadalupe Mountains Visitation

