



## Haleakala National Park Trip Assistant

### How Much Time?

If you're headed up the volcano for sunrise, know that it will be cold. Be prepared for it, so you want to stick around for the afternoon (hiking Sliding Sands Trail). If you need some beach time after that, I get it, go for it. The next stop is Kipahulu. It doesn't take long to get there on the unpaved-car-rent-

al-agreement-breaking stretch of road going counterclockwise around Haleakala. Take Hana Highway, and it'll take a while, likely a full day, and you're way better off spending a night at Hana to break up that very stressful drive. Kipahulu doesn't take much time either. It's one hike: Pipiwai to Waimoky Falls.

### Need to Know

- A **permit** is required for Haleakala sunrise. Clouds tend to bank up against the eastern flank of Haleakala, making regularly dramatic sunrises. Sunsets aren't usually as stunning, but they can be good and are getting more popular. They'll certainly be warmer.
- Haleakala reaches 10,023 feet. Kipahulu is basically at sea level. Temperature decreases 3-5°F with every 1,000 feet of elevation gain.
- Piilani Highway (Hwy 31) is quite nice, but I don't make the rental car company agreements.

### Maps

Haleakala National Park Map: [PDF](#) | [JPG](#)  
Maui: [PDF](#) | [JPG](#)

### [Google Map w/ Trails and Attractions](#)

All 63 National Parks Map: [PDF](#) | [JPG](#)  
Remote Islands NPS Units Map: [PDF](#) | [JPG](#)

### Highlights

Haleakala Summit  
Kalahaku Overlook  
Pa Kaoao Overlook  
Haleakala Summit Viewpoint  
Hosmer Grove  
Waimoku Falls  
'Ohe'o Gulch



## Favorite Trails

**Easy**

[Leleiwi Overlook](#)

**Moderate**

[Pipiwai](#)

**Strenuous**

[Sliding Sands](#)

## Activities

Hiking

Backpacking

Stargazing

Swimming

Birdwatching

## Highlights

[Hookipa Beach](#) (turtles and windsurfing)

[Honomanu Falls](#)

[Waianapanapa SP](#)

[Kaihalulu Beach](#)

[Makena \(Big\) Beach](#)

[Wailea Beach](#)

[Black Rock Beach](#)

[Honolua Bay](#)

[Waihee Point](#)

## Road Trip

Here's a [Google Map](#) to help plan a Maui trip. It's a good start, but I'd highly recommend making your own.

There's much more to our country. Here's another [Google Map](#) with points of interest across all types of public land.

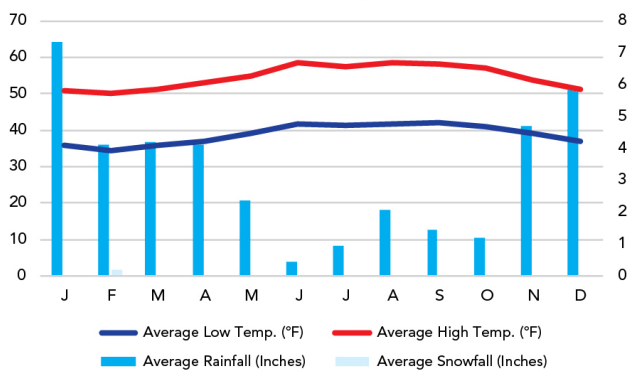
For campers, here's a [Google Map](#) with National Forest campgrounds. National Park campgrounds are difficult to reserve (there are about 200!). With nearly 5,000 national forest campgrounds, you can usually pull in and find a spot.

Look at the huge gash running north from the West Maui mountains, that's Honokohau Valley, which leads to Honokohau Falls, there's a private boardwalk to a viewpoint of the falls and helicopters might take you there. Speaking of, [helicopter tour of Molokai](#) is excellent. As is the [boat tour around Lanai](#).

## When To Go

### Weather

Haleakala Summit: 10,023 ft Elevation



### Visitation

Haleakala Visitation

