

Indiana Dunes National Park Trip Assistant

How Much Time?

With a day, spend some time at West Beach (and hike Dune Succession Trail while there). Hike Cowle's Bog and/or Paul H. Douglas trails. And then catch sunset from the waterfront. West Beach, Portage Lakefront, Lake View Beach are all good choices. It's also a good idea to check out Indiana Dunes State Park, where you're allowed to play in the dunes.

More time here, means more time on the beaches or daytrips to Chicago or South Bend. It's also a good idea to check out the ranger programs. They have some creative offerings in summer! And then there are two destinations you can only explore with a ranger, Mount Baldy and Pinhook Bog. However, you can get a good view of Baldy and enjoy the beach from the hiking trail.

Need to Know

- About half of all visitors arrive in summer. Summer is nicest, and the only time you'll want to play in the cool Lake Michigan water, but it's far from the only good time to visit.
- The **South Shore Line** connects the park with Chicago and South Bend. While it's not a particularly good idea to arrive here by train (the park is disjointed, making a vehicle nearly mandatory to explore it), but the train is a good option for a daytrip into Chicago.

Maps

Indiana Dunes National Park Map: [PDF](#) | [JPG](#)

[Google Map w/ Trails and Attractions](#)

All 63 National Parks Map: [PDF](#) | [JPG](#)

Northern National Park Service Units Map: [PDF](#) | [JPG](#)

Highlights

West Beach
Chellberg Farm
Dunbar Beach
Mount Baldy
Pinhook Bog (Ranger Tours Only)
Portage Lakefront



Favorite Trails

Easy

[West Beach](#) (combines 3 trails)

[River Walk](#)

Moderate

[Dune Succession](#)

Mount Baldy

[Pinhook Bog](#)

[Paul H. Douglas](#)

Strenuous

[Cowles Bog](#)

Activities

Swimming

Hiking

Biking

Horseback Riding

Cross-Country Skiing

Birdwatching

See this [Google Map](#) for pins to all the favorite trails and attractions.

Road Trip

Here's a [Google Map](#) to help plan road trips from the east (Cuyahoga Valley), north (Isle Royale), west (Gateway Arch), and south (Mammoth Cave). It's a good start, but I'd highly recommend making your own.

There's much more to our country. Here's another [Google Map](#) with points of interest across all types of public land.

For campers, here's a [Google Map](#) with National Forest campgrounds. National Park campgrounds are difficult to reserve (there are about 200!). With nearly 5,000 national forest campgrounds, you can usually pull in and find a spot.

Highlights

[Pictured Rocks NL](#) (MI)

[Tahquamenon Falls SP](#) (MI)

[Mackinac Island](#) (MI)

[Sleeping Bear Dunes NL](#) (MI)

[Bond Falls](#) (MI)

[Peninsula State Park](#) (WI)

[Maquoketa Caves SP](#) (IA)

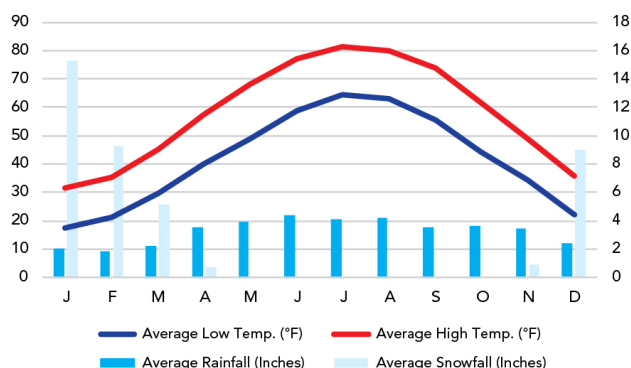
[Starved Rock State Park](#) (IL)

[Turkey Run State Park](#) (IN)

When To Go

Weather

Indiana Dunes National Park: 683 ft Elevation



Visitation

Indiana Dunes Visitation

