



Joshua Tree National Park Trip Assistant

How Much Time?

I could spend days wandering around aimlessly enjoying all the different Joshua Trees and whacky rocks. For others an hour or two is plenty.

I'd set driving Park Boulevard, stopping wherever you're compelled to stop and hiking Boy Scout Trail to Wonderland of Rocks (just beyond

Willow Hole) as your mandatory itinerary.

There's about 65 miles of trails here, and some serious 4x4 roads, so you could spend an action-packed week here too. Regardless, be sure to spend at least one night. This place provides some of the best sunrises/sunsets.

Need to Know

- **Reservations** required for most campgrounds.
- It's busy fall through spring. Summer's hot, with comfortable mornings.
- Water is only available at Cottonwood, Black Rock, Indian Cove Ranger Station, West Entrance Station, and Oasis Visitor Center. Come prepared.
- The most easily-accessible Joshua Trees are found between the intersection of Pinto Basin Road and Park Boulevard and the Joshua Tree (West) Entrance Station. There are many great spots.

Maps

Joshua Tree National Park Map: [PDF](#) | [JPG](#)

[Google Map w/ Trails and Attractions](#)

All 63 National Parks Map: [PDF](#) | [JPG](#)

Western National Park Service Units Map: [PDF](#) | [JPG](#)

Highlights

Park Boulevard
Indian Cove
Keys Ranch
Geology Tour Road
Keys View
Hall of Horrors



Favorite Trails

Easy

[Hidden Valley](#)

[Split Rock](#)

[Arch & Heart Rocks](#)

[Skull Rock](#)

[Keys View](#)

[Cap Rock](#)

[Cholla Cactus Garden](#)

[Barker Dam](#)

Moderate

[Boy Scout](#) (to Wonderland of Rocks)

[Hall of Horrors](#)

[Lost Palm Oasis](#)

[Lost Horse Mine](#)

Strenuous

[Boy Scout](#)

[Ryan Mountain](#)

[Mastodon Peak](#)

Activities

Off-Roading

Hiking

Backpacking

Rock Climbing

Horseback Riding

Biking

Stargazing

See this [Google Map](#) for pins to favorite trails and attractions.

Highlights

[Organ Pipe Cactus NM](#) (AZ)

[Imperial Sand Dunes](#) (CA)

[Mojave Nat'l Preserve](#) (CA)

[Topanga SP](#) (CA)

[Angeles National Forest](#) (CA)

[Palms-to-Pines Hwy](#) (CA)

[\(San Bernardino NF\)](#)

[Tahquitz Falls](#) (CA)

[Ladder Canyon](#) (CA)

[Anza Borrego Desert SP](#) (CA)

I don't know this area. Was 100+°F last time out there, so hustled through.

Road Trip

Here's a [Google Map](#) to help plan road trips from the east (Saguaro), north (Death Valley), west (Channel Islands), and the south (Mexican border). It's a good start, but I'd highly recommend making your own.

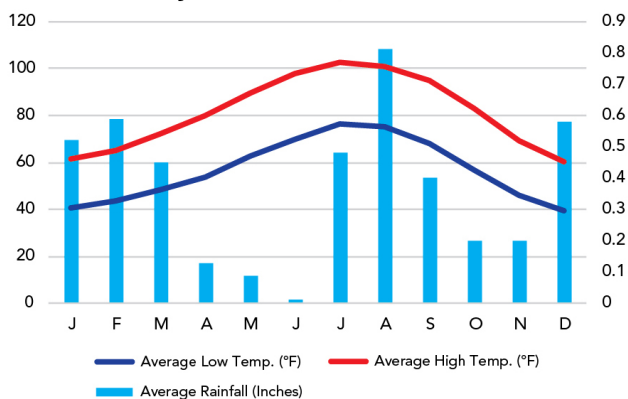
There's much more to our country. Here's another [Google Map](#) with points of interest across all types of public land.

For campers, here's a [Google Map](#) with National Forest campgrounds. National Park campgrounds are difficult to reserve (there are about 200!). With nearly 5,000 national forest campgrounds, you can usually pull in and find a spot.

When To Go

Weather

Twentynine Palms: 1,975 ft Elevation



Visitation

Joshua Tree Visitation

