



Katmai National Park Trip Assistant

How Much Time?

There is a campground here, so you don't have to be locked into expensive lodging, but it's very very hard to make [reservations](#). However, you still have to get there by bushplane. The bears are cool and all, but how much time do you really want

to spent watching them? A few hours? A few days? It seems wasteful to take an expensive bush flight here for a few hours of bear-watching but that's the reality of things. There aren't 100s of miles of trails here to occupy your time but the [Valley of 10,000 Smokes tour](#) is enjoyable.

Need to Know

- Services are only available in the park from June through mid-September (even though the climate is not that bad).
- Bear watching at Brooks Camp is best in July when salmon are swimming up river, and then again in September when bear feast on their carcasses.
- Brooks Lodge is reserved via [lottery](#). [Camp sites](#) are released all at once, and they go fast for July.

Maps

Katmai National Park Map: [PDF](#) | [JPG](#)

[Google Map w/ Trail and Attractions](#)

All 63 National Parks Map: [PDF](#) | [JPG](#)

Alaska National Park Service Units Map: [PDF](#) | [JPG](#)

Highlights

Brooks Falls
Valley of 10,000 Smokes
Hallo Bay
Mount Katmai
Novarupta
Mount Mageik



Favorite Trails

Unlike most parks, hiking is not the star attraction, but you can hike up to [Dumpling Mountain](#).

Road Trip

You don't get here by road!

There's much more to our country. Here's another [Google Map](#) with points of interest across all types of public land.

For campers, here's a [Google Map](#) with National Forest campgrounds. National Park campgrounds are difficult to reserve (there are about 200!). With nearly 5,000 national forest campgrounds, you can usually pull in and find a spot.

Activities

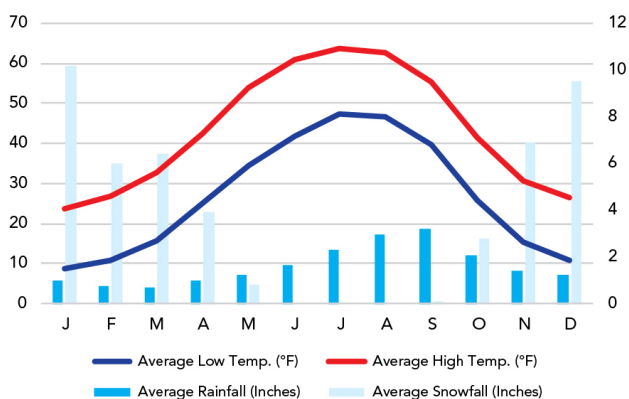
Bear Viewing
Flightseeing
Hunting
Fishing
Hiking
Backpacking
Paddling

See this [Google Map](#) for pins to trails and attractions.

When To Go

Weather

King Salmon: 66 ft Elevation



Visitation

Katmai Visitation

