



Kenai Fjords National Park Trip Assistant

How Much Time?

You don't want to skip Exit Glacier. That's a day or less. Boat cruises down the coast are a good use of your time, and some visitors go on multi-day paddling trips, utilizing the backcountry cabins and campsites. You can also backpack across Harding Icefield. Both those things require serious skills and experience.

Need to Know

- Exit Glacier is the only portion of the park accessible to motorists. The road closes fall through spring, but remains open to cross-country skiing, snowshoeing and snowmobiling.
- You can get here from Anchorage via the [train](#).
- The coast is often shrouded in clouds, so, while it's very pretty, you may want to play tours (flightseeing and boat) by eye, waiting until you arrive. If they're fully booked, there are alternative activities.
- There are [two backcountry cabins](#) as well as luxurious lodges on embedded private land.

Maps

Kenai fjords National Park Map: [PDF](#) | [JPG](#)

Exit Glacier: [PDF](#) | [JPG](#)

[Google Map w/ Trails and Attractions](#)

All 63 National Parks Map: [PDF](#) | [JPG](#)

Alaska National Park Service Units Map: [PDF](#) | [JPG](#)

Highlights

Exit Glacier

Harding Icefield

Aialik Bay

Holgate Arm

Pedersen Lagoon

McCarty Glacier

Bear Glacier



Favorite Trails

It's mostly trailless wilderness, but there are two great hikes: [Glacier Overlook](#) and [Harding Icefield](#). Hike them!

Road Trip

Here's a [Google Map](#) with a road trip to the three road-accessible Alaskan National Parks.

There's much more to our country. Here's another [Google Map](#) with points of interest across all types of public land.

For campers, here's a [Google Map](#) with National Forest campgrounds. National Park campgrounds are difficult to reserve (there are about 200!). With nearly 5,000 national forest campgrounds, you can usually pull in and find a spot.

Activities

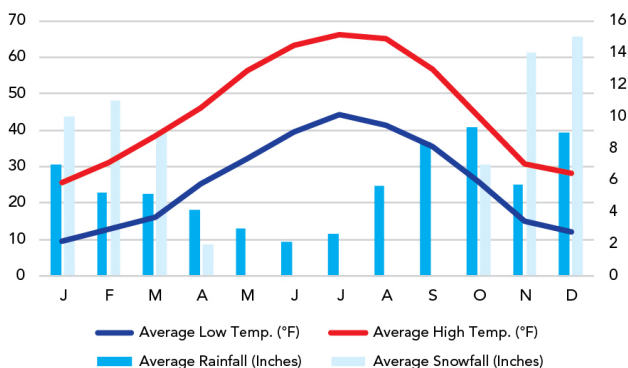
Hiking
Backpacking
Mountaineering
Boat Tours
Cruises
Kayaking
Flightseeing
Fishing

See this [Google Map](#) for pins to trails and attractions.

When To Go

Weather

Seward: 424 ft Elevation



Visitation

Kenai Fjords Visitation

