



## Kobuk Valley National Park Trip Assistant

### How Much Time?

A trip here for most is a flight over or a quick stop at the sand dunes to touch the earth and get back in the air, flying back over a two million acre wilderness.

### Need to Know

- Kobuk Valley resides north of the Arctic Circle, enjoying a brief summer with 24-hour light.
- It's primarily reached by bush plane and explored by raft.
- Each year a few hundred thousand caribou cross the park traveling between their breeding and calving grounds.
- Lowlands are swampy permafrost making for difficult travel.

### Maps

Kobuk Valley National Park Map: [PDF](#) | [JPG](#)

[Google Map w/ Attractions](#)

All 63 National Parks Map: [PDF](#) | [JPG](#)

Alaska National Park Service Units Map: [PDF](#) | [JPG](#)

### Highlights

Great Kobuk Sand Dunes  
Onion Portage (caribou crossing)



## Favorite Trails

Kobuk Valley is a mostly trailless wilderness.

## Road Trip

You don't get here by road!

There's much more to our country. Here's another [Google Map](#) with points of interest across all types of public land.

For campers, here's a [Google Map](#) with National Forest campgrounds. National Park campgrounds are difficult to reserve (there are about 200!). With nearly 5,000 national forest campgrounds, you can usually pull in and find a spot.

## Activities

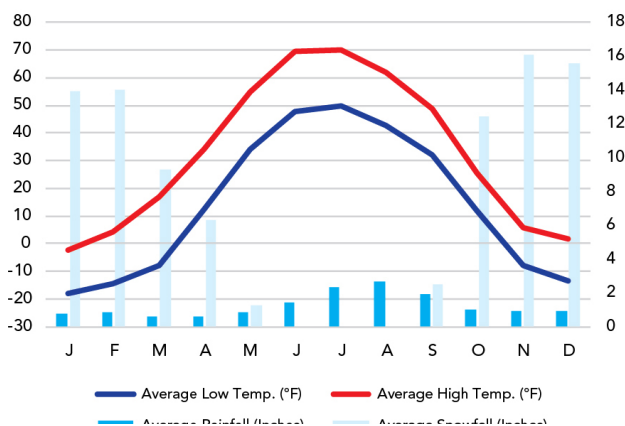
Backpacking  
Paddling  
Flightseeing

See this [Google Map](#) for pins to attractions.

## When To Go

### Weather

Bettles: 645 ft Elevation



### Visitation

Kobuk Valley Visitation

