



Lake Clark National Park Trip Assistant

How Much Time?

The park is huge and almost entirely undeveloped. And it's an expensive place to see just a small portion. So, figure out your budget, think about the opportunity cost, and then decide if a few days in a remote Alaskan setting is better than a few weeks in Wyoming or Colorado? That's the question you need to ask yourself here.

Need to Know

- The park is almost exclusively accessed by air taxi. You can catch a flight from Anchorage to Iliamna or fly direct via bush plane from Anchorage, Homer, Soldotna, or Kodiak.
- The famed Proenneke's Cabin is situated on the shore of Upper Twin Lake.
- Boat tours of Lake Clark are available.
- Hunting is allowed in the preserve portion of the park.
- Chinitna Bay, Silver Salmon Creek, and Crescent Lake are a few popular bear-viewing destinations.

Maps

Lake Clark National Park Map: [PDF](#) | [JPG](#)

[Google Map w/ Attractions](#)

All 63 National Parks Map: [PDF](#) | [JPG](#)

Alaska National Park Service Units Map: [PDF](#) | [JPG](#)

Highlights

Chinitna Bay
Iliamna Volcano
Redoubt Volcano
Proenneke Cabin
The Tusk
Lake Clark



Favorite Trails

Unlike most parks, hiking is not the star attraction.

Road Trip

You don't get here by road!

There's much more to our country. Here's another [Google Map](#) with points of interest across all types of public land.

For campers, here's a [Google Map](#) with National Forest campgrounds. National Park campgrounds are difficult to reserve (there are about 200!). With nearly 5,000 national forest campgrounds, you can usually pull in and find a spot.

Activities

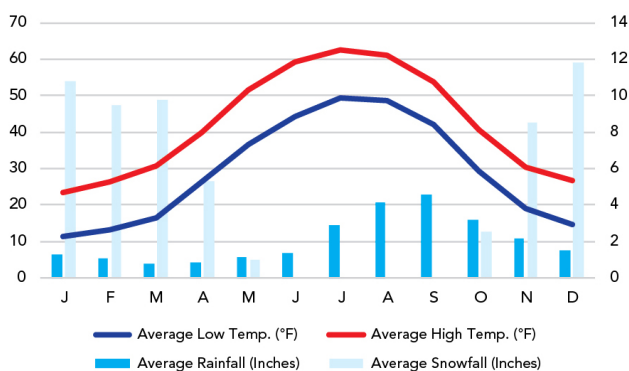
Hiking
Backpacking
Flightseeing
Boating
Hunting
Fishing

See this [Google Map](#) for pins to attractions.

When To Go

Weather

Iliamna: 142 ft Elevation



Visitation

Lake Clark Visitation

