

Lassen Volcanic National Park Trip Assistant

How Much Time?

If you want to explore each region of the park, you'll need a couple days. If you want to do the highlights (Lassen Peak,

Cinder Cone, Manzanita Lake, and maybe Brokeoff Mountain), a night or two should do the trick. There's much more to see in this region.

Need to Know

- **Reservations** are required for camping.
- The main park road typically closes in winter, fall through late spring.
- Most of the park burned in the Dixie Fire in 2021 and the Park Fire in 2024.

Maps

Lassen Volcanic National Park Map: [PDF](#) | [JPG](#)

Manzanita Lake: [PDF](#) | [JPG](#)

Region: [PDF](#) | [JPG](#)

[Google Map w/ Trails and Attractions](#)

All 63 National Parks Map: [PDF](#) | [JPG](#)

Western National Park Service Units Map: [PDF](#) | [JPG](#)

Highlights

Lassen Peak

Lassen Volcanic National Park

Highway

Manzanita Lake

Lake Helen

Butte Lake



Favorite Trails

Easy

[Manzanita Lake](#)

Moderate

[Bumpass Hell](#)

[Kings Creek Falls](#)

[Mill Creek Falls](#)

[Chaos Crags & Crags Lake](#)

Strenuous

[Cinder Cone](#)

[Lassen Peak](#)

[Brokeoff Mountain](#)

[Prospect Peak](#)

Activities

Hiking

Backpacking

Paddling

Horseback Riding

Fishing

Stargazing

Cross-country Skiing

Snowshoeing

See this [Google Map](#) for pins to favorite trails and attractions.

Highlights

[Lava Beds NM](#) (CA)

[McArthur Burney Falls](#) (CA)

[Mount Shasta](#) (CA)

([Shasta-Trinity NF](#))

[McCloud Falls](#) (CA)

(Three separate falls)

[Lake Tahoe](#) (CA)

[Feather Falls](#) (CA)

[North Table Mountain](#) (CA)

Once again, Northern Nevada is a mystery to me. Not sure why Bonanza takes place here :)

Road Trip

Here's a [Google Map](#) to help plan road trips from the north (Crater Lake), west (Redwood), and south (Yosemite). It's a good start, but I'd highly recommend making your own.

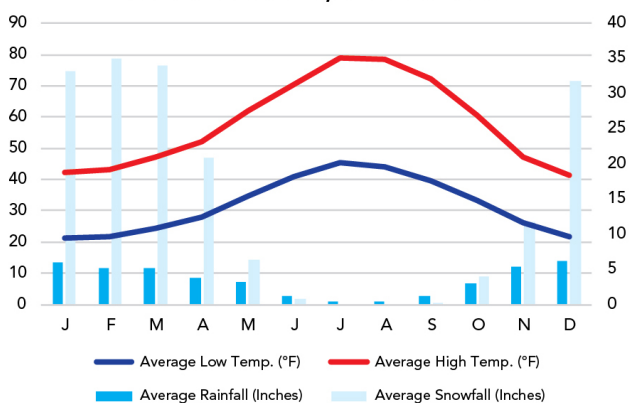
There's much more to our country. Here's another [Google Map](#) with points of interest across all types of public land.

For campers, here's a [Google Map](#) with National Forest campgrounds. National Park campgrounds are difficult to reserve (there are about 200!). With nearly 5,000 national forest campgrounds, you can usually pull in and find a spot.

When To Go

Weather

Manzanita Lake: 5,749 ft Elevation



Visitation

Lassen Volcanic Visitation

