

Mammoth Cave National Park Trip Assistant

How Much Time?

Mammoth Cave is another tour-dependent park. And, quite frankly, while the area is pretty, I'm not sure I'd come to the park without being able to go in a cave.

So, you'll be planning your trip around cave tours. I'd definitely recommend going on more than one. Not only is Mammoth Cave the largest cave in the world (more than 420 miles), there are several caves in the park (one of which can be seen on the new Wondering Woods Tour).

After your cave tours are all sorted out, it's time to think about other activities. The park is set up pretty well for biking. Even a few trails are open to mountain bikes. The north half of the park is a playground for horseback riders. And the Green River is a very popular paddling destination. Hiking is just okay. If hiking and cave tours is all you have in mind for your trip, one night here should suffice. Two if you arrive late.

Need to Know

- It is possible to get same-day cave tour [reservations](#), but the way things have been these past few years, you're better off considering it reservations required (especially for rarely-offered tours like Wild Cave, River Styx, Violet City, etc.).
- Broadway, Gothic Avenue, Historic, Discovery, Star Chamber, Violet City, River Styx, and Trog tours all begin at the Natural Entrance. If you don't join one of these, be sure to check out the Natural Entrance on your own.
- The Wild Cave Tour is great but it's also difficult. You must be at least 16 years old. Hiking boots are required. And your chest/hip measurements must be less than 42" to make sure you can make it through the tight squeezes.
- The cave is always cool, so remember to bring an extra layer if you're visiting in summer.

Maps

Mammoth Cave National Park Map: [PDF](#) | [JPG](#)

[Google Map w/ Trails, Attractions, and Outfitters](#)

All 63 National Parks Map: [PDF](#) | [JPG](#)

Eastern National Park Service Units Map: [PDF](#) | [JPG](#)

Highlights

Mammoth Cave
Flint Ridge Road
Green River Ferry
Turnhole Bend



Favorite Trails

Easy

[Turnhole Bend](#)

Moderate

[River Styx Spring](#)

[Cedar Sink](#)

[Green River Bluffs](#)

Activities

Cave Tours

Hiking

Backpacking

Horseback Riding

Biking

Paddling

Fishing

See this [Google Map](#) for pins to area outfitters offering tours and rentals as well as all favorite trails and attractions.

Road Trip

Here's a [Google Map](#) to help plan road trips from the east (New River Gorge), north (Indiana Dunes), west (Gateway Arch), and south (Chatanooga, TN). It's a good start, but I'd highly recommend making your own.

There's much more to our country. Here's another [Google Map](#) with points of interest across all types of public land.

For campers, here's a [Google Map](#) with National Forest campgrounds. National Park campgrounds are difficult to reserve (there are about 200!). With nearly 5,000 national forest campgrounds, you can usually pull in and find a spot.

Highlights

[Red River Gorge](#) (KY)

Daniel Boone National Forest

[Turkey Run State Park](#) (IN)

[Giant City State Park](#) (IL)

[Garden of the Gods](#) (IL)

Shawnee National Forest

[Fall Creek Falls SP](#) (TN)

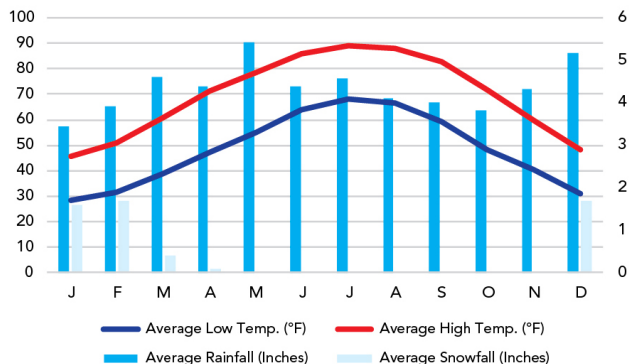
[Burgess Falls SP](#) (TN)

[Cummins Falls SP](#) (TN)

When To Go

Weather

Mammoth Cave: 760 ft Elevation



Visitation

Mammoth Cave Visitation

