



## Mesa Verde National Park Trip Assistant

### How Much Time?

Touring Mesa Top Loop, Cliff Palace Loop, and Wetherill Mesa in a day is doable. If you want to read every sign and see every site, then you'd need a bit more.

The main contingency in amount of time spent here is cliff dwelling

tours. (**Reservations** are required.) They're all worth doing and each one takes about 1-2 hours.

Personally, I feel like you're better off trying to maximize time in the Rockies to the east or southern Utah to the west.

### Need to Know

- **Reservations** are required for cliff dwelling tours.
- None of the cliff dwelling tours are easy. You're hiking to a settlement built into a cliff's alcove. They all involve a ladder or two and a fair amount of elevation gain.
- Spruce Tree House can be toured on your own, when it's open (unfortunately it's been closed for years).

### Maps

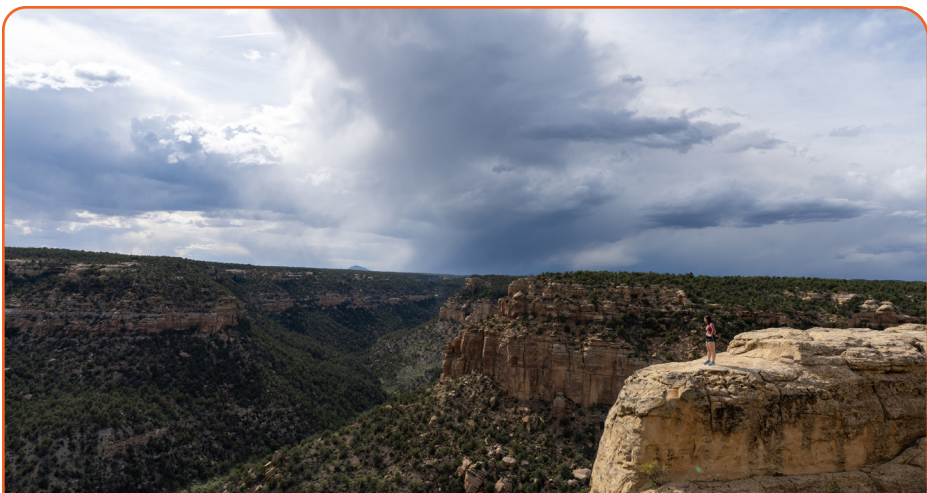
Mesa Verde National Park Map: [PDF](#) | [JPG](#)  
Chapin Mesa: [PDF](#) | [JPG](#)  
Wetherill Mesa: [PDF](#) | [JPG](#)  
Morefield Campground: [PDF](#) | [JPG](#)

### [Google Map w/ Trails and Attractions](#)

All 63 National Parks Map: [PDF](#) | [JPG](#)  
Southwestern NPS Units Map: [PDF](#) | [JPG](#)

### Highlights

Cliff Palace  
Balcony House  
Long House  
Step House  
Square Tower House  
Spruce Tree House  
Sun Temple  
Kodak House  
Rock Canyon Tower View



## Favorite Trails

### Easy

Montezuma Valley Overlook

### Moderate

[Petroglyph Point](#)  
[Point Lookout](#)  
[Prater Ridge](#)

## Activities

### [Cliff Dwelling Tours](#)

Hiking

Cross-country Skiing

See this [Google Map](#) for pins to favorite trails and attractions.

## Highlights

[Treasure Falls](#) (CO)  
[\(Rio Grande NF\)](#)

[Mount Sneffels](#) (CO)  
[Ice Lake/Island Lake](#) (CO)  
[Million Dollar Highway](#) (CO)  
[\(San Juan NF\)](#)

[Hovenweep NM](#) (CO)

[Canyon de Chelly NM](#) (AZ)  
[Ship Rock](#) (NM)  
[Ah-Shi-Sle-Pah](#) (NM)  
[Angel Peak](#) (NM)

Not-so-much the Mesa Verde area, but everywhere around it is awesome. I don't know enough yet. Google Maps is your friend!

## Road Trip

Here's a [Google Map](#) to help plan road trips from the east (Great Sand Dunes), north (Black Canyon of the Gunnison), west (Canyonlands), and south (Petrified Forest). It's a good start, but I'd highly recommend making your own.

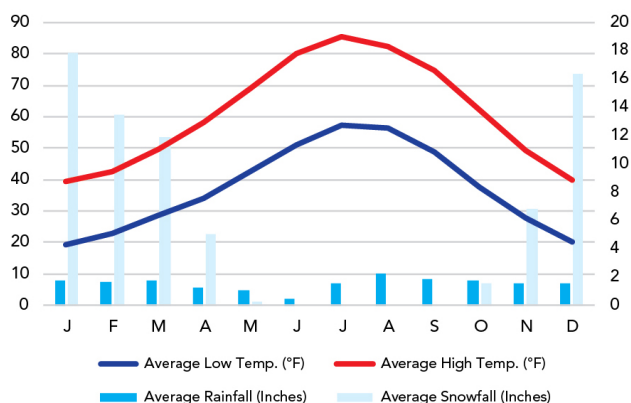
There's much more to our country. Here's another [Google Map](#) with points of interest across all types of public land.

For campers, here's a [Google Map](#) with National Forest campgrounds. National Park campgrounds are difficult to reserve (there are about 200!). With nearly 5,000 national forest campgrounds, you can usually pull in and find a spot.

## When To Go

### Weather

Mesa Verde National Park: 7,140 ft Elevation



### Visitation

Mesa Verde Visitation

