

North Cascades National Park Trip Assistant

How Much Time?

This is a beautiful, extremely mountainous region. However, it's not very accessible. The North Unit has no roads. The South Unit can only be reached by an unpaved road. Most people only get to peek into the park from a distance via Maple Pass Trail

(along WA-20) or from Baker Snoqualmie National Forest (Artist Point, Picture Lake, Table Mountain, Ptarmigan Ridge, or Lake Ann). So, in short, you need to be a hiker/backpacker/mountaineer to truly experience this place. Otherwise, it's a quick drive along WA-20 (which is pretty but not the same).

Need to Know

- WA-20 typically closes for winter at Ross Lake Dam.
- The park is intentionally complex. North Cascades North Unit is roadless (you can hike in from Mount Baker-Snoqualmie National Forest or Goodell Creek or Stetattle Creek or Thornton Lakes or the Beaver Trails) The South Unit can be accessed by the unpaved Cascade River Road. Most visitors only enter Ross Lake and/or Lake Chelan national recreation areas.

Maps

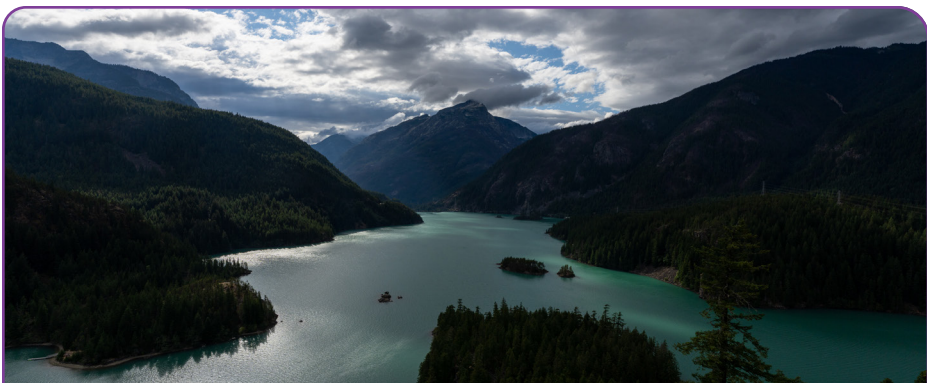
North Cascades National Park Map: [PDF](#) | [JPG](#)
WA-20: [PDF](#) | [JPG](#)
Stehekin: [PDF](#) | [JPG](#)
Region: [PDF](#) | [JPG](#)

[Google Map w/ Trails and Attractions](#)

All 63 National Parks Map: [PDF](#) | [JPG](#)
Western National Park Service Units Map: [PDF](#) | [JPG](#)

Highlights

WA-20
Cascade River Road
Diablo Lake Overlook
Picture Lake, Lake Ann, Ptarmigan Ridge (Mount Baker-Snoqualmie National Forest)
Stehekin
Ross Lake Overlook
Gorge Creek Falls



Favorite Trails

Easy

[Rainy Lake](#)

Moderate

[Maple Pass](#)

[Thornton Lakes/Trapper's](#)

[Peak](#) (scramble required)

[Blue Lake](#)

[Diablo Lake](#)

[Rainbow Creek](#)

Strenuous

[Cascade Pass/Sahale Arm](#)

[Hidden Lake](#)

[Sourdough Mountain](#)

Activities

Hiking

Backpacking

Mountaineering

Whitewater Rafting

Biking

Fishing

Cross-country Skiing

Snowshoeing

See this [Google Map](#) for pins to favorite trails and attractions.

Highlights

[Lake Ann](#), [Picture Lake](#),

[Artist Point](#), [Ptarmigan](#)

[Ridge](#) (WA)

[\(Mt Baker-Snoqualmie NF\)](#)

[Lake Como](#), [Trapper Peak](#),
_____ (MT)

[\(Bitterroot National Forest\)](#)

[Sawtooth Lake](#), [Finger of](#)

[Fate](#), [Grandjean](#), _____

(ID)

[\(Sawtooth NF\)](#)

I'm going to put some more effort into these once the roads open.

Road Trip

Here's a [Google Map](#) to help plan road trips from the east (Glacier), west (Olympic), and south (Mount Rainier). It's a good start, but I'd highly recommend making your own.

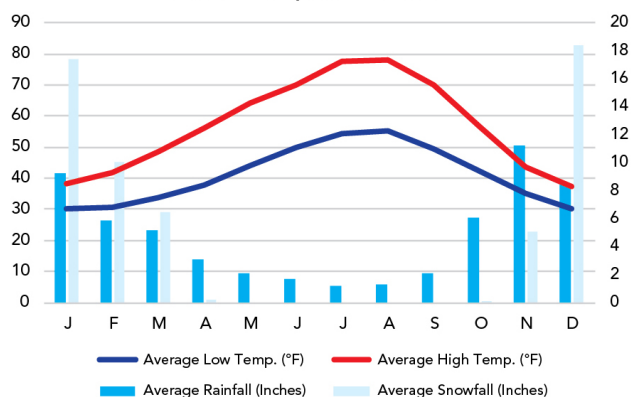
There's much more to our country. Here's another [Google Map](#) with points of interest across all types of public land.

For campers, here's a [Google Map](#) with National Forest campgrounds. National Park campgrounds are difficult to reserve (there are about 200!). With nearly 5,000 national forest campgrounds, you can usually pull in and find a spot.

When To Go

Weather

Ross Dam: 1,236 ft Elevation



Visitation

North Cascades Visitation

