



Olympic National Park Trip Assistant

How Much Time?

There are more than a dozen disconnected regions here. Just driving to them all takes a day or two. If you want to get out and hike a little, you'll need some more time.

Now, if you're trying to pare things down a bit. Hurricane Ridge, Lake Crescent, Sol Duc, Hoh, and the

Coast (particularly Rialto, Ruby, and Second beaches) should be your initial focus. There's fantastic hiking at Hurricane Ridge and Sol Duc. Tide-pooling at the beaches. And Lake Crescent is a pretty picturesque setting with a few good trails nearby. And, if you love trees, there are some big ones in the park and National Forest.

Need to Know

- **Reservations** are required for several park campgrounds.
- Being close to Seattle, a mid-week trip is a good idea.
- The vast majority of visitors arrive in summer, but Hurricane Ridge remains open for winter, and the coast is quite temperate. The bad news is winter is often wet/snowy and overcast. You'd want to plan a longer trip then, just to try and get a good weather day or two.
- There's no ideal place for a base camp. Lake Crescent is the best you can do.

Maps

Olympic National Park Map: [PDF](#) | [JPG](#)

[Google Map w/ Trails and Attractions](#)

All 63 National Parks Map: [PDF](#) | [JPG](#)

Western National Park Service Units Map: [PDF](#) | [JPG](#)

Highlights

Hurricane Ridge
Lake Crescent
Rialto Beach
Ruby Beach
Hoh Rain Forest
Obstruction Point Road



Favorite Trails

Easy

[Rialto Beach](#)

[Second Beach](#)

[Marymere Falls](#)

[Third Beach](#)

[Hall of Mosses](#)

[Sol Duc Falls](#)

[Ozette Loop](#)

[Rapids Loop](#)

Moderate

[Shi Shi Beach](#)

[Hurricane Hill](#)

Strenuous

[High Divide](#)

[Grand Lake](#)

[Lake Angeles](#)

[Pyramid Mountain](#)

[Klahhane Ridge](#)

Extreme

[Mount Storm King](#)

Activities

Hiking

Backpacking

Boating

Biking

Swimming

See this [Google Map](#) for pins to favorite trails and attractions.

Highlights

I'll add the route from the east once roads open.

[Lake Ann](#), [Picture Lake](#), [Artist Point](#), [Ptarmigan Ridge](#) (WA)
([Mt Baker-Snoqualmie NF](#))

Olympic and Mount Rainier are pretty close together. A lot of people like talking about Cape Flattery. It's okay. But there are a lot of very remote and isolated places that aren't on the way to anything else, and influential people always seem to like to recommend them. It takes a lot of time to get there and back. It's fine but you can do better.

Road Trip

Here's a [Google Map](#) to help plan road trips from the east (Glacier), north (N. Cascades), and south (Mount Rainier). It's a good start, but I'd highly recommend making your own.

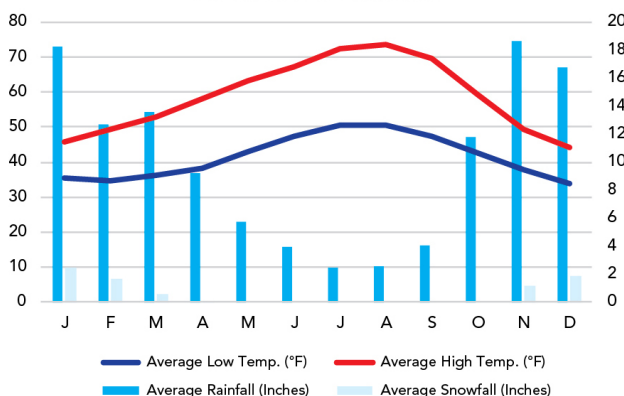
There's much more to our country. Here's another [Google Map](#) with points of interest across all types of public land.

For campers, here's a [Google Map](#) with National Forest campgrounds. National Park campgrounds are difficult to reserve (there are about 200!). With nearly 5,000 national forest campgrounds, you can usually pull in and find a spot.

When To Go

Weather

Forks: 372 ft Elevation



Visitation

Olympic Visitation

