

Petrified Forest National Park Trip Assistant

How Much Time?

With no overnight accommodations beyond backpacking in the wilderness, it's really a drive-thru park. But if you really enjoy petrified wood, you should stick around and hike through Jasper Forest and around Lithodendron Wash (Wilderness Access Trail). Most people drive the road, stop at a few viewpoints, and stretch their legs at spots like Blue Mesa, Crystal Forest, and Long Logs/Agate House. That's perfectly fine. There's a lot to see in this corner of the country.

Need to Know

- The park is gated and hours change from season to season, but it's basically open from sunrise to sunset.
- The only way to spend the night in the park is backpacking in the wilderness area.
- The easiest-to-find petrified wood specimens are all on the park's southern half (Giant Logs, Long Logs, Crystal Forest, Jasper Forest, Blue Mesa). There are many in the north too, but it takes more effort (hiking the Wilderness Access Trail).

Maps

Petrified Forest National Park Map: [PDF](#) | [JPG](#)
Region: [PDF](#) | [JPG](#)

[Google Map w/ Trails and Attractions](#)

All 63 National Parks Map: [PDF](#) | [JPG](#)
Southern National Park Service Units Map: [PDF](#) | [JPG](#)

Highlights

Blue Mesa
Painted Desert
Crystal Forest
Giant Logs
Rainbow Forest Museum
Kachina and Chinde Points
Newspaper Rock



Favorite Trails

Easy

[Crystal Forest](#)

[Long Logs/Agate House](#)

[Painted Desert Rim](#)

Moderate

[Blue Mesa](#)

[Jasper Forest](#)

Strenuous

[Wilderness Access](#)

Activities

Hiking

Backpacking

Horseback Riding

Biking

See this [Google Map](#) for pins to favorite trails and attractions. It's a pretty easy park to get around. One road, connecting two entrances/exits, both right off the interstate.

Highlights

[El Malpais NM](#) (NM)

[Valley of the Gods](#) (AZ)

[Monument Valley](#) (AZ)

[Canyon de Chelly NM](#) (AZ)

[Lava River Cave](#) (AZ)

[Sunset Crater NM](#) (AZ)

[Wupatki NM](#) (AZ)

[Gila Cliff Dwelling](#) (NM)

[Chiricahua NM](#) (AZ)

There's a ton of cool stuff in this area. Scroll around the [point-of-interest map](#).

Road Trip

Here's a [Google Map](#) to help plan road trips from the east (Albuquerque, NM), north (Great Sand Dunes), west (Grand Canyon), and south (Saguaro). It's a good start, but I'd highly recommend making your own.

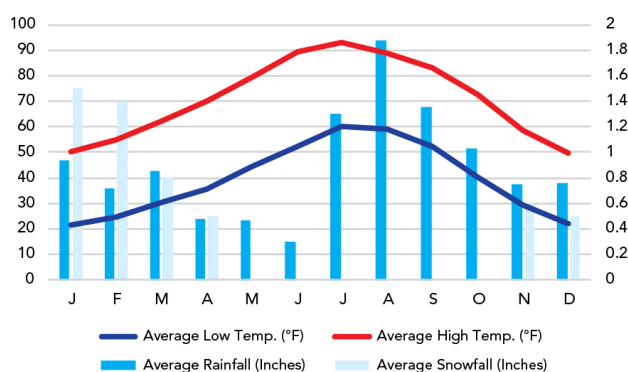
There's much more to our country. Here's another [Google Map](#) with points of interest across all types of public land.

For campers, here's a [Google Map](#) with National Forest campgrounds. National Park campgrounds are difficult to reserve (there are about 200!). With nearly 5,000 national forest campgrounds, you can usually pull in and find a spot.

When To Go

Weather

Painted Desert: 5,758 ft Elevation



Visitation

Petrified Forest Visitation

