



## Pinnacles National Park Trip Assistant

### How Much Time?

Unless you're coming here to climb some rocks, you don't need a whole lot of time. Doing the High Peaks Loop with Bear Gulch Cave is a half day for most. And, if it's summer, you probably won't want to spend a whole lot of time here anyway. It will be hot, and you'd be better off in the high eleva-

tions of Yosemite or Lassen Volcanic.

With that said, a very reasonable plan here is to arrive at the west side, get a taste of the park by hiking Balconies Cave and Juniper Canyon + Tunnel (which goes through the High Peaks). And then camp on the east side and hike Bear Gulch Cave + High Peaks in the morning.

### Need to Know

- The West Entrance closes over night. The East Entrance is open 24/7.
- Caves close due to seasonal flooding and bat occupation. Check their status prior to arrival.
- Bring two light sources. A headlamp is best as it will free your hands for the little bit of crawling required.
- Shuttles used to run on the East Side on busy weekends and holidays (their status is presently up in the air).

### Maps

Pinnacles National Park Map: [PDF](#) | [JPG](#)  
Region: [PDF](#) | [JPG](#)

[Google Map w/ Trails and Attractions](#)

All 63 National Parks Map: [PDF](#) | [JPG](#)  
Western National Park Service Units Map: [PDF](#) | [JPG](#)

### Highlights

High Peaks  
Bear Gulch Cave  
Balconies Cave  
California Condors



## Favorite Trails

### Easy

[Prewett Point](#)

### Moderate

[Bear Gulch Cave](#)

[Balconies Cave](#)

### Strenuous

[High Peaks Loop](#)

[Juniper Canyon](#)

[Condor Gulch](#)

[Chalone Peaks](#)

## Activities

Hiking

Rock Climbing

Birdwatching

See this [Google Map](#) for pins to favorite trails and attractions.

## Highlights

[Hume Lake](#), [Buck Rock](#)

[Lookout](#), [Delilah Lookout](#)  
([Sequoia NM](#))

[Alamere Falls](#) (CA)

([Point Reyes NS](#))

[Muir Woods NM](#) (CA)

[Golden Gate NRA](#) (CA)

[Shark Fin Cove](#) (CA)

[Hole-in-the-Wall Beach](#) (CA)

[Fern Grotto Beach](#) (CA)

[Julia Pfeiffer Burns SP/](#)  
[McWay Falls \(CA\)](#) - PCH

1 was closed beyond this point so you're forced to drive out-and-back.

[Garrapata State Park](#) (CA)

Again, check the [POI map](#) for more ideas.

## Road Trip

Here's a [Google Map](#) to help plan road trips from the east (Sequoia), north/west (Golden Gate NRA), and west/south (McWay Falls). It's a good start, but I'd highly recommend making your own.

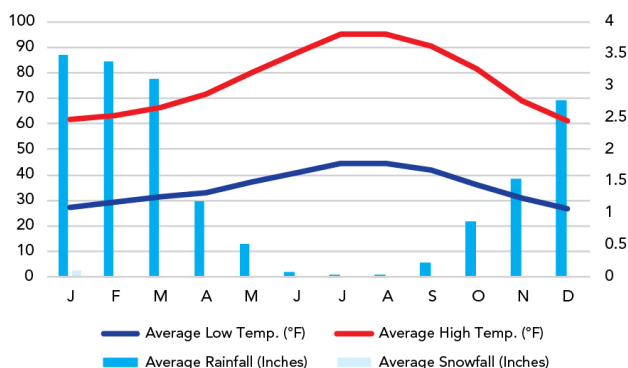
There's much more to our country. Here's another [Google Map](#) with points of interest across all types of public land.

For campers, here's a [Google Map](#) with National Forest campgrounds. National Park campgrounds are difficult to reserve (there are about 200!). With nearly 5,000 national forest campgrounds, you can usually pull in and find a spot.

## When To Go

### Weather

Pinnacles National Park: 1,307 ft Elevation



### Visitation

Pinnacles Visitation

