



Redwood National Park Trip Assistant

How Much Time?

Driving through on the US-101 and Newton B. Drury Scenic Parkway won't take you long. But there are about 200 miles of hiking trails to explore. One night is enough to see the highlights. Just know you need a permit to get to Gold Bluffs/Fern Canyon (or enter outside permit hours).

You definitely want to go to Tall Trees. That requires a permit whenever you'd like to go. There are good alternatives for the permitless among us. You can hike to Fern Canyon via James Irvine and Miner's Ridge Trails. And there are plenty of tall trees at Lady Bird Johnson Grove, Stout Grove, Boy Scout Trail, and around Prairie Creek.

Need to Know

- A [permit](#) is required for Tall Trees.
- A [permit](#) is required for Fern Canyon during peak visitation.
- Weather is comfortable year-round but foggy and wet (particularly in winter). Fog makes for a fairytale-like environment as long as the occasional ray of sun is able to poke through.
- Migratory birds fly through during spring and fall.
- There's an \$8 day-use fee for the State Parks, but park passes are accepted.

Maps

Redwood National Park Map: [PDF](#) | [JPG](#)

[Google Map w/ Trails and Attractions](#)

All 63 National Parks Map: [PDF](#) | [JPG](#)

Western National Park Service Units Map: [PDF](#) | [JPG](#)

Highlights

Newton B. Drury Scenic Parkway
Cal-Barrel Road
Gold Bluffs Beach
High Bluff Overlook
Howland Hill Road
Big Tree Wayside



Favorite Trails

Easy

[Fern Canyon](#)

[Stout Grove](#)

[Lady Bird Johnson Grove](#)

[Hidden Beach](#)

[Crescent Beach](#)

Moderate

[Tall Trees](#)

[Boy Scout](#)

Enderts Beach

[James Irvine](#)

[Miner's Ridge](#)

[Gold Bluffs](#)

[Browns Creek/Rhododendron/South Fork](#)

Strenuous

[Damnation Creek](#)

[Klamath Overlook](#)

Activities

Hiking

Backpacking

Biking

Paddling

Horseback Riding

See this [Google Map](#) for pins to favorite trails and attractions.

Highlights

[Mount Shasta](#) (CA)

([Shasta-Trinity NF](#))

[McCloud Falls](#) (CA)

(Three separate falls)

[Mill Creek Falls](#) (OR)

[Oregon Caves NM](#) (OR)

If you make it up this far you really need to go through the Umpqua River Valley (OR-138) to look at some water falls.

[Samuel H. Boardman](#) (OR)

[Harris Beach SP](#) (OR)

[Shark Fin Cove](#) (CA)

[Golden Gate NRA](#) (CA)

Road Trip

Here's a [Google Map](#) to help plan road trips from the east (Lassen Volcanic), north (Crater Lake/Coast), and south (Channel Islands). It's a good start, but I'd highly recommend making your own.

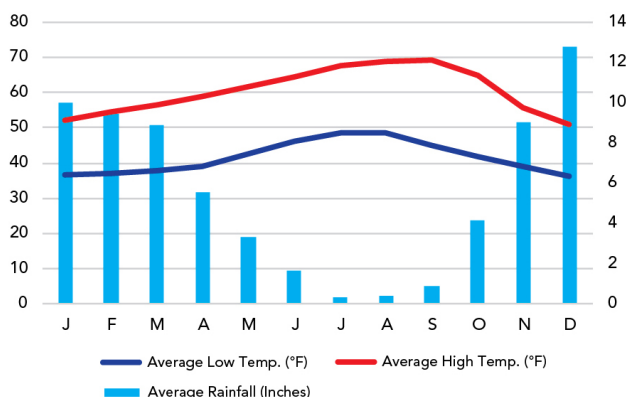
There's much more to our country. Here's another [Google Map](#) with points of interest across all types of public land.

For campers, here's a [Google Map](#) with National Forest campgrounds. National Park campgrounds are difficult to reserve (there are about 200!). With nearly 5,000 national forest campgrounds, you can usually pull in and find a spot.

When To Go

Weather

Orick Prairie: 160 ft Elevation



Visitation

Redwood Visitation

