



Sequoia & Kings Canyon National Park Trip Assistant

How Much Time?

This is another park you cannot generalize how much time to spend here. If you love to hike/backpack, this is some of the finest backcountry wilderness on the planet. If you're sticking to the roads, there really isn't that much to see (although the drive down to Roads End is spectacular).

There's very little easily-accessible High Sierra. Outside of Moro Rock (and Mineral King), you must earn the views. Driving, plan a full day (it will likely be busy and hot in summer). Hiking, target Lakes Trail, maybe another day at Mineral King, and, better yet, head around to the Eastern Sierra to get a look at Mount Whitney.

Need to Know

- **Reservations** are required for camping.
- Summer is very busy and hot in the foothills. Spring brings wildflowers and charged up waterfalls. Fall brings cooler weather and small crowds.
- There is a **free summer shuttle**.
- You can do a more pampered backpacking trip thanks to **Sequoia Camp** and **Bearpaw Camp**.
- Marmots have been conditioned to chew on rubber car parts at Mineral King.

Maps

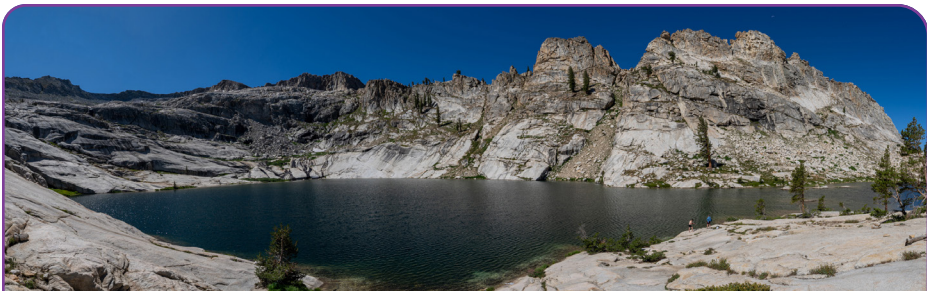
Sequoia & Kings Canyon National Park Map: [PDF](#) | [JPG](#)
Detail: [PDF](#) | [JPG](#)
Region: [PDF](#) | [JPG](#)

Google Map w/ Trails and Attractions

All 63 National Parks Map: [PDF](#) | [JPG](#)
Western National Park Service Units Map: [PDF](#) | [JPG](#)

Highlights

Giant Forest Museum
Crescent Meadow
General Sherman
Grant Grove
Tunnel Log
Roads End
Crystal Cave
Whitney Portal (Inyo NF)



Favorite Trails

Easy

[General Grant](#)

[Big Trees](#)

[Congress](#)

[Big Stump](#)

[Sunset Rock](#)

Moderate

[Moro Rock](#)

[Mist Falls](#)

[Monarch Lakes](#)

General Sherman

[Eagle Lake](#)

[Big Baldy Ridge](#)

[Franklin Lakes](#)

Strenuous

[Lakes](#)

[Mosquito Lakes](#)

[Alta Peak](#)

[Crystal Lake](#)

Extreme

[Mount Whitney](#)

Activities

Cave Tours

Hiking

Backpacking

Rock Climbing

Horseback Riding

Cross-country Skiing

Snowshoeing

Sledding

See this [Google Map](#) for pins to favorite trails and attractions.

Highlights

Outside of Moro Rock and Mineral King, Sequoia and Kings Canyon don't serve up many jaw-dropping High Sierra views. Most require long hikes or tedious drives on unpaved roads. You could do that, earning those views, but you could also drive around the mountains to the Eastern Sierra. Places like [Convict Lake](#) and [Alabama Hills](#) are stunning, accessible, open year-round, and much less crowded than Generals Highway. And you can actually get a good look at Mount Whitney!

Road Trip

Here's a [Google Map](#) to help plan road trips from the north (Yosemite), west (Pinnacles), and south (Joshua Tree). It's a good start, but I'd highly recommend making your own.

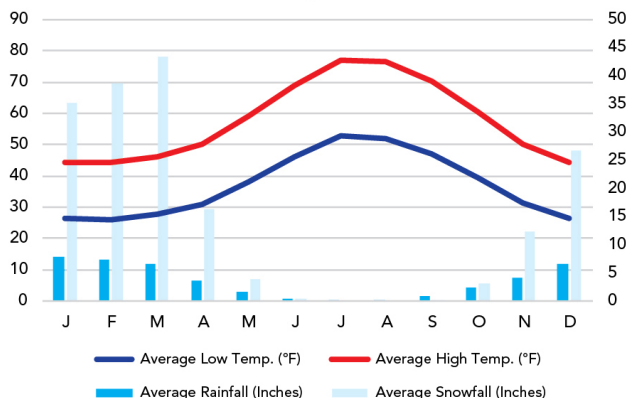
There's much more to our country. Here's another [Google Map](#) with points of interest across all types of public land.

For campers, here's a [Google Map](#) with National Forest campgrounds. National Park campgrounds are difficult to reserve (there are about 200!). With nearly 5,000 national forest campgrounds, you can usually pull in and find a spot.

When To Go

Weather

Grant Grove: 6,578 ft Elevation



Visitation

Sequoia Visitation

