

## Shenandoah National Park Trip Assistant

### How Much Time?

Shenandoah is another park where you could zip through in a few hours, enjoying a few overlooks and a short trail or two, or spend a week, getting deeper into the mountains, enjoying picturesque waterfalls and craggy mountains. Most visitors only make a quick stop.

If you like to hike, Old Rag should be at the top of your list. It's good and it's popular, requiring a [day-use pass](#) during peak season.

After that, it's off to Skyline Drive. The park offers an interesting combination of hiking and history. Try to take in a little of each. Mill Prong (which can be looped with Laurel Prong) to Rapidan Camp and Snead Farm Loop are good choices for history. Riprap/Wildcat Ridge Loop and Overall Run Falls or Little Devil's Stairs are good choices for scenery.

Two nights feels like enough time here, then see some other things in the area including Washington, D.C.

### Need to Know

- [Reservations](#) are required to hike Old Rag during peak season.
- [Reservations](#) are required for camping.
- Visitation peaks in October for fall foliage, but it's pretty heavy from May through November.
- Being close to Washington, D.C., a mid-week trip is a very good idea.
- Rapidan Camp (Hoover's summer White House) is only accessible during ranger-guided tours. However, you can hike to it any time via Mill Prong Trail (4 miles).

### Maps

Shenandoah National Park Map: [PDF](#) | [JPG](#)

Mathews Arm Map: [PDF](#) | [JPG](#)

Skyland Map: [PDF](#) | [JPG](#)

Big Meadows Map: [PDF](#) | [JPG](#)

Lewis Mountain Map: [PDF](#) | [JPG](#)

Loft Mountain Map: [PDF](#) | [JPG](#)

### [Google Map w/ Trails, Attractions, and Outfitters](#)

All 63 National Parks Map: [PDF](#) | [JPG](#)

Eastern National Park Service Units Map: [PDF](#) | [JPG](#)

### Highlights

Skyline Drive

Hazletop Ridge Overlook (54.5)

The Point Overlook (mile 55.5)

Pinnacles Overlook (mile 35)

Thorofare Mtn Overlook (40.5)

Dickey Ridge Visitor Center

Rapidan Camp

Fall foliage



## Favorite Trails

### Easy

[Stony Man](#)

[Lands Run Falls](#)

[Black Rock Summit](#)

[Frazier Discovery](#)

[Limberlost](#)

[Hickerson Hollow](#)

### Moderate

[Passamaquoddy](#)

[Mary's Rock](#)

### Compton Peak

[Hawksbill Mountain](#)

[Dark Hollow Falls](#)

### Strenuous

[Riprap/Wildcat Loop](#)

[Little Devil's Stairs](#)

[Doyle's River Falls](#)

[Overall Run Falls](#)

### Extreme

[Old Rag](#)

## Activities

Hiking

Backpacking

Rock Climbing

Horseback Riding

Fishing

Birdwatching

See this [Google Map](#) for pins to area outfitters offering tours and rentals as well as all favorite trails and attractions. I left off the route because it'd be driving Sky-line Drive and going to Old Rag. Stop at the overlooks that look nice to you and aren't full.

## Road Trip

Here's a [Google Map](#) to help plan road trips from the east (Washington, D.C.), north (Cuyahoga Valley), west (New River Gorge), and south (Asheville). It's a good start, but I'd highly recommend making your own.

There's much more to our country. Here's another [Google Map](#) with points of interest across all types of public land.

For campers, here's a [Google Map](#) with National Forest campgrounds. National Park campgrounds are difficult to reserve (there are about 200!). With nearly 5,000 national forest campgrounds, you can usually pull in and find a spot.

## Highlights

[National Mall](#) (D.C.)

[Coopers Rock SP](#) (WV)

[Dolly Sods Wild.](#) (WV)

[Douthat State Park](#) (VA)

[Linville Gorge](#) (NC)

[Pilot Mountain SP](#) (NC)

[McAfee Knob](#) (VA)

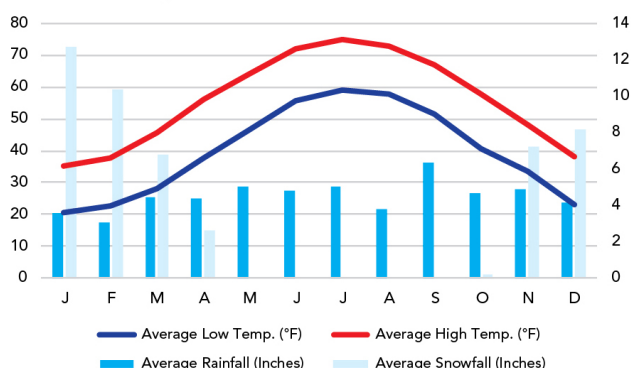
[Natural Bridge SP](#) (VA)

[Crabtree Falls](#) (VA)

## When To Go

### Weather

Big Meadows: 3,539 ft Elevation



### Visitation

Shenandoah Visitation

