



Theodore Roosevelt National Park Trip Assistant

How Much Time?

You definitely could get a pretty good idea of what this region of the country is like by driving through the South and North units in a day, stopping at a few overlooks, enjoying the wildlife, and maybe doing a couple quick hikes, but I'd suggest spending one

night at each main unit. This way you can do some more serious hiking. With a little more time, then you start thinking about making the drive to Elkhorn Ranch (it's just ruins), or maybe paddling the Little Mo, or racking up more miles on the park's underrated trail network.

Need to Know

- Wild horses are seen in the South Unit.
- The North and South units are great for wildlife viewing, but the south tends to be better (larger herds + more roads).
- Maltese Cross Cabin is open via ranger tour in summer, and self-guided the rest of the year.

Maps

South Unit: [PDF](#) | [JPG](#)

North Unit: [PDF](#) | [JPG](#)

Region: [PDF](#) | [JPG](#)

[Google Map w/ Trails, Attractions, and Outfitters](#)

All 63 National Parks Map: [PDF](#) | [JPG](#)

Northern National Park Service Units Map: [PDF](#) | [JPG](#)

Highlights

Scenic Loop Drive (South)

Beef Corral Bottom (South)

Maltese Cross Cabin (South)

Prairie Dogs

Scenic Drive (North)

River Bend Overlook (North)

Cannonball Concretions (North)

Oxbow Overlook (North)



Favorite Trails

Easy

[Buck Hill](#)

[Little Mo](#)

Moderate

[Big Plateau](#)

[Painted Canyon](#)

[Lower Paddock Creek](#)

[Upper Caprock Coulee](#)
[Sperati](#)

Strenuous

[Petrified Forest Loop](#)

[Lone Tree Loop](#)

[Achenbach Loop](#)

[Buckhorn Loop](#)

Activities

Hiking

Backpacking

Horseback Riding

Paddling

Biking

Fishing

Cross-country Skiing

Snowshoeing

See this [Google Map](#) for pins to favorite trails and attractions. There's no essentials route, because it isn't essential :). Do the scenic loop and drive, and stop for the highlights and animals.

Road Trip

Here's a [Google Map](#) to help plan road trips from the east (Voyageurs), west (Glacier), and south (Wind Cave). It's a good start, but I'd highly recommend making your own.

There's much more to our country. Here's another [Google Map](#) with points of interest across all types of public land.

For campers, here's a [Google Map](#) with National Forest campgrounds. National Park campgrounds are difficult to reserve (there are about 200!). With nearly 5,000 national forest campgrounds, you can usually pull in and find a spot.

Highlights

[Makoshika SP](#) (MT)

[Black Elk Peak](#) (SD)

[Needles Hwy](#) (SD)

[Mount Rushmore](#) (SD)

[Custer State Park](#) (SD)

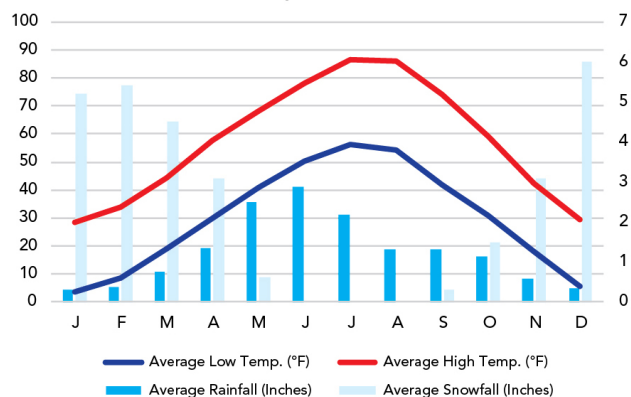
[Bison Roundup](#) (SD)

If you're continuing west, there's a lot of incentive to hustle to the Rockies. Things start to get real interesting!

When To Go

Weather

Medora: 2,267 ft Elevation



Visitation

Theodore Roosevelt Visitation

