

Voyageurs National Park Trip Assistant

How Much Time?

This is not a show up and have fun kind of park. You need a plan, and, preferably, a boat. More than one-third of the park is water and most of the land is only accessible by boat (unless it's winter and the lakes are frozen). Paddling is great at nearby Boundary Waters, but here, the lakes are huge and you're better off with a motor. (You have some pretty good paddle options from

Ash River or you can find outfitters to drop you off deeper in the park.) Back to boating. If you're uncomfortable or uninterested in renting or bringing a boat, you can join [boat tours](#). And that's a decent alternative, but it's not nearly the same thing as the freedom of boating around these lakes and camping at very secluded lakeside campsites under the stars.

Need to Know

- You really need to rent a boat to get to know this park.
- North Canoe Voyage ranger programs are good too, but not the same sort of freedom.
- [Boat tours](#) are also offered.
- If you rent a boat, know what you're getting into. Houseboats are huge and slow, and you have to tow another boat. Whatever you rent, bring a GPS or make sure the boat has one on its depth finder.

Maps

Voyageurs National Park Map: [PDF](#) | [JPG](#)

[Google Map w/ Trails, Attractions, and Outfitters](#)

All 63 National Parks Map: [PDF](#) | [JPG](#)

Northern National Park Service Units Map: [PDF](#) | [JPG](#)

Highlights

Grassy Bay Cliffs
North Canoe Voyage
Boat Tours
Anderson Bay Overlook
Ice Roads
Kettle Falls Hotel



Favorite Trails

It's a boating park, but you can hike [Oberholtzer Trail](#) (Rainy Lake) or [Blind Ash Bay Trail](#) (Ash River). They're okay.

Road Trip

Here's a [Google Map](#) to help plan road trips from the east (Grand Portage, MN), west (Theodore Roosevelt), and south (Minneapolis, MN). It's a good start, but I'd highly recommend making your own.

There's much more to our country. Here's another [Google Map](#) with points of interest across all types of public land.

For campers, here's a [Google Map](#) with National Forest campgrounds. National Park campgrounds are difficult to reserve (there are about 200!). With nearly 5,000 national forest campgrounds, you can usually pull in and find a spot.

Activities

Hiking
Backpacking
Boating
Boat Tours
Paddling
Fishing

See this [Google Map](#) for pins to area outfitters offering tours and rentals as well as all favorite trails and attractions. I did not include a route on this map because it's a boating park, but know the visitor centers are very far apart by land (or water). To me, Ash River is the best spot to start canoeing. Boating, it's debatable, but I'd start from Crane Lake.

Highlights

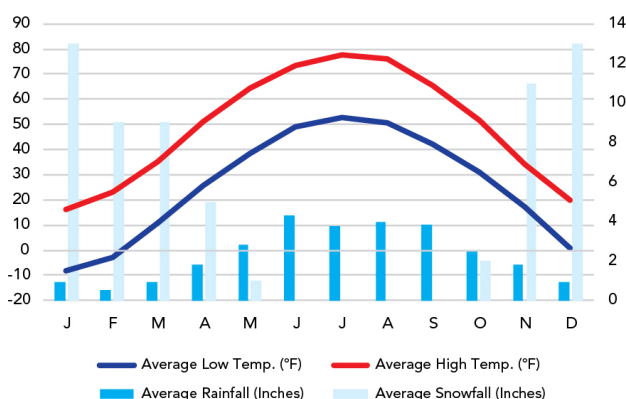
[Judge C.R. Magney SP](#) (MN)
[Temperance River SP](#) (MN)
[Caribou Falls SP](#) (MN)
[Tettegouche SP](#) (MN)
[Maquoketa Caves SP](#) (IA)

Western Minnesota/Eastern Dakotas are not great

When To Go

Weather

Kabetogama: 1,200 ft Elevation



Visitation

Voyageurs Visitation

