

White Sands National Park Trip Assistant

How Much Time?

With only nine miles of trails, you don't need much time to see a lot of the park, but it is a setting that changes dramatically, season-to-season, day-to-day, hour-to-hour, so there is value in sticking around for a while to watch it change. Weather is usually good here, but with Lincoln National Forest to the east and Organ Mountains-Desert Peaks National Monument to the west, you could spend a few days and not get bored.

Need to Know

- The park closes overnight (typically open from 7am until sunset). You can spend the night here thanks to ten (first-come, first-served, reserved at the entrance booth) backcountry sites in the dunes. You do not want to be camping out there in high winds.
- Missile testing regularly delays the park's opening. Check the park website (or call 575.479.6124).
- Sunset Strolls are offered most days. All you have to do is show up at the meeting area (4.7 miles from the entrance) about an hour before sunset.
- Summers are hot but the sand stays cool!

Maps

White Sands National Park Map: [PDF](#) | [JPG](#)

[Google Map w/ Trails and Attractions](#)

All 63 National Parks Map: [PDF](#) | [JPG](#)

Southern National Park Service Units Map: [PDF](#) | [JPG](#)

Highlights

Heart of the Sands
Lake Lucero
Sand Sledding
Great Picnic Areas
Sunset



Favorite Trails

Moderate

Alkali Flat

Activities

Hiking
Sledding
Biking
Horseback Riding
Photography

See this [Google Map](#) for pins to favorite trails and attractions.

Road Trip

Here's a [Google Map](#) to help plan road trips from the east (Carlsbad Caverns), north (Great Sand Dunes), west (Saguaro), and south (El Paso, TX). It's a good start, but I'd highly recommend making your own.

There's much more to our country. Here's another [Google Map](#) with points of interest across all types of public land.

For campers, here's a [Google Map](#) with National Forest campgrounds. National Park campgrounds are difficult to reserve (there are about 200!). With nearly 5,000 national forest campgrounds, you can usually pull in and find a spot.

Highlights

Sunspot Solar Observatory
(**Lincoln National Forest**)

Rio Grande Gorge Bridge
(NM)

(**Rio Grande del Norte NM**)

Bandalier NM (NM)

Valles Caldera NP (NM)

Valley of Fires (NM)

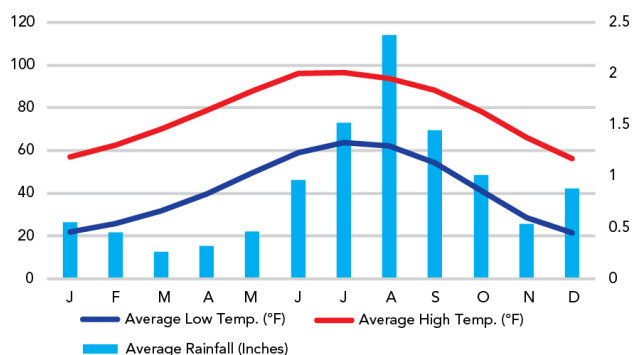
Mt. Lemmon SkyCenter Observatory (AZ)
(**Coronado National Forest**)
Chiricahua NM (AZ)

Organ Mountains-Desert Peaks NM (NM)
Franklin Mountains SP (TX)

When To Go

Weather

White Sands National Park: 4,005 ft Elevation



Visitation

White Sands Visitation

