



Wrangell-St. Elias National Park Trip Assistant

How Much Time?

If you have a healthy budget, there are few better destinations to go on bush plane-adventures (with a relatively clear). The typical trip has visitors motoring down McCarthy Road 60 miles (no big rigs). From there, it's a five-mile walk (or shuttle) into Kennecott National

Historic Landmark. So, if you're thinking of hiking to Root Glacier, tack an extra 10 miles on to that distance. The park is more than 13 million acres of wilderness. That's four Death Valleys! Most spend very little time, but you could spend a lot with the appropriate skills and resources.

Need to Know

- Almost everyone arrives between June and September, and that's when you should visit too.
- You can camp in pullouts along the two unpaved roads (McCarthy and Nabesna). There's also a small primitive campground along Nabesna Road.
- The park recommends high-clearance for both roads.
- Most major rental car companies do not allow their cars to go off pavement.

Maps

Wrangell-St. Elias National Park Map: [PDF](#) | [JPG](#)
Profile: [PDF](#) | [JPG](#)

[Google Map w/ Trails and Attractions](#)

All 63 National Parks Map: [PDF](#) | [JPG](#)
Alaska National Park Service Units Map: [PDF](#) | [JPG](#)

Highlights

Root Glacier
Mount Drum
Mount Wrangell
Icy Bay
Malaspina Glacier
Logan Glacier
Kennecott Copper Mine



Favorite Trails

The main hike everyone does is to [Root Glacier](#).

Road Trip

Here's a [Google Map](#) with a road trip to the three road-accessible Alaskan National Parks.

There's much more to our country. Here's another [Google Map](#) with points of interest across all types of public land.

For campers, here's a [Google Map](#) with National Forest campgrounds. National Park campgrounds are difficult to reserve (there are about 200!). With nearly 5,000 national forest campgrounds, you can usually pull in and find a spot.

Activities

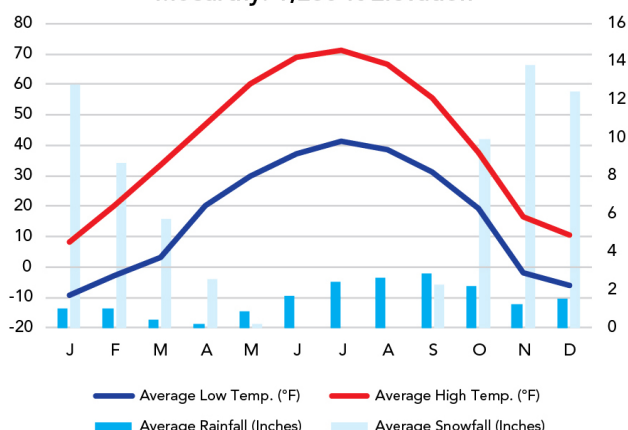
Hiking
Backpacking
Mountaineering
Flightseeing
Rafting
Floating
Hunting
Fishing

See this [Google Map](#) for pins to trails and attractions.

When To Go

Weather

McCarthy: 1,250 ft Elevation



Visitation

Wrangell-St. Elias Visitation

