



## Yellowstone National Park Trip Assistant

### How Much Time?

I've met a few people who spent one day in Yellowstone and loved it. So, I'm not going to say it's impossible to see a lot and have a great time in a day, but it certainly isn't ideal. The park is 2.2 million acres. But you can probably see everything in the highlights list in a day, as long as bison don't cause too many traffic jams.

I'd recommend a couple things. If you want a base camp, camp/lodge at Canyon Village. It's the most central thing. You'll still spend a ton of time driving, but it's much better than driving in and out of

the park. I'd also try to spend one night at Upper Geyser Basin (Old Faithful). The busiest part of the park is the road between West Yellowstone and Old Faithful—it's darn near the busiest area in all the parks. Unfortunately there isn't a campground here. Only lodges. In addition to not having to deal with the traffic more than the minimum amount, you really want to spend time wandering around Upper Geyser Basin. It's much more than Old Faithful. Several geysers have regular eruptions. If you love hiking/backpacking and waterfalls, consider heading to Cascade Corner.

### Maps

Yellowstone National Park Map: [PDF](#) | [JPG](#)  
Campground Details: [PDF](#) | [JPG](#)

### [Google Map w/ Trails, Attractions, and Outfitters](#)

All 63 National Parks Map: [PDF](#) | [JPG](#)  
Northern National Park Service Units Map: [PDF](#) | [JPG](#)

### Need to Know

- Reservations are required for camping. You can make them through [Xanterra](#) manages about 85% of the campsites. The rest can be reserved through [recreation.gov](#).
- Most roads close for winter. You can still visit, but it's a totally different experience, getting around the park by snowcoach or snowmobile.
- For the best views of Grand Prismatic Spring, go to the overlook (just south of the massive spring).

### Highlights

Grand Canyon of the Yellowstone  
Grand Prismatic Spring  
Upper Geyser Basin (Old Faithful, Grand Geyser, Castle Geyser, Riverside Geyser, Morning Glory)  
Hayden Valley  
Lamar Valley  
Tower Fall  
West Thumb Geyser Basin  
Mammoth Terrace  
Norris Geyser Basin  
Gibbon Falls  
Great Fountain Geyser



## Favorite Trails

### Easy

[Fairy Falls](#)

[Wraith Falls](#)

[Storm Point](#)

[Trout Lake](#)

[Lone Star Geyser](#)

### Moderate

[Dunanda Falls](#)

[Union Falls](#)

[Bunsen Peak](#)

[Osprey Falls](#)

### [Yellowstone River Overlook](#)

[Mystic Falls](#)

[Observation Point](#)

### Strenuous

[Avalanche Peak](#)

[Mount Washburn](#)

[Hellroaring](#)

[Seven Mile Hole](#)

[Sky Rim Loop](#)

[Heart Lake](#)

### Extreme

[Electric Peak](#)

## Activities

Hiking

Backpacking

Boating

Horseback Riding

Biking

Swimming

Fishing

Photography

Snowmobiling

Snowcoach Tours

Snowshoeing

Cross-country Skiing

See this [Google Map](#) for pins to favorite trails and attractions.

## Road Trip

Here's a [Google Map](#) to help plan road trips from the east (Wind Cave), north (Glacier), west (Crater Lake), and south (Grand Teton). (Will make the map once roads are open in summer.)

There's much more to our country. Here's another [Google Map](#) with points of interest across all types of public land.

For campers, here's a [Google Map](#) with National Forest campgrounds. National Park campgrounds are difficult to reserve (there are about 200!). With nearly 5,000 national forest campgrounds, you can usually pull in and find a spot.

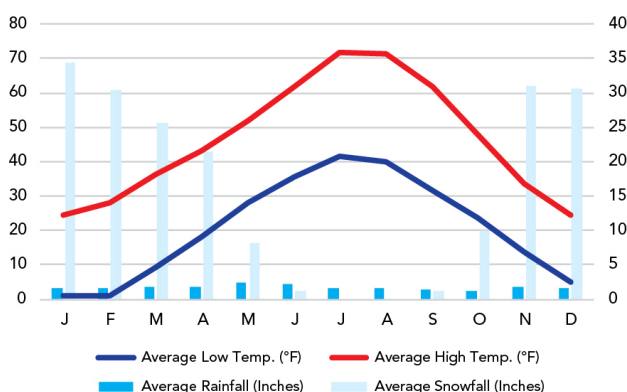
## Highlights

Will update this in summer when I can complete the Road Trip map when all the high elevation roads open up for the year—stay tuned! There are many amazing places in the area like Chief Joseph Scenic Byway and Beartooth Highway!

## When To Go

### Weather

Lake Yellowstone: 7,890 ft Elevation



### Visitation

Yellowstone Visitation

